

高寶  
建  
材

磁  
磚  
型  
錄

# GLOBE

## 高寶建材磁磚型錄

給您最信賴的居家環境

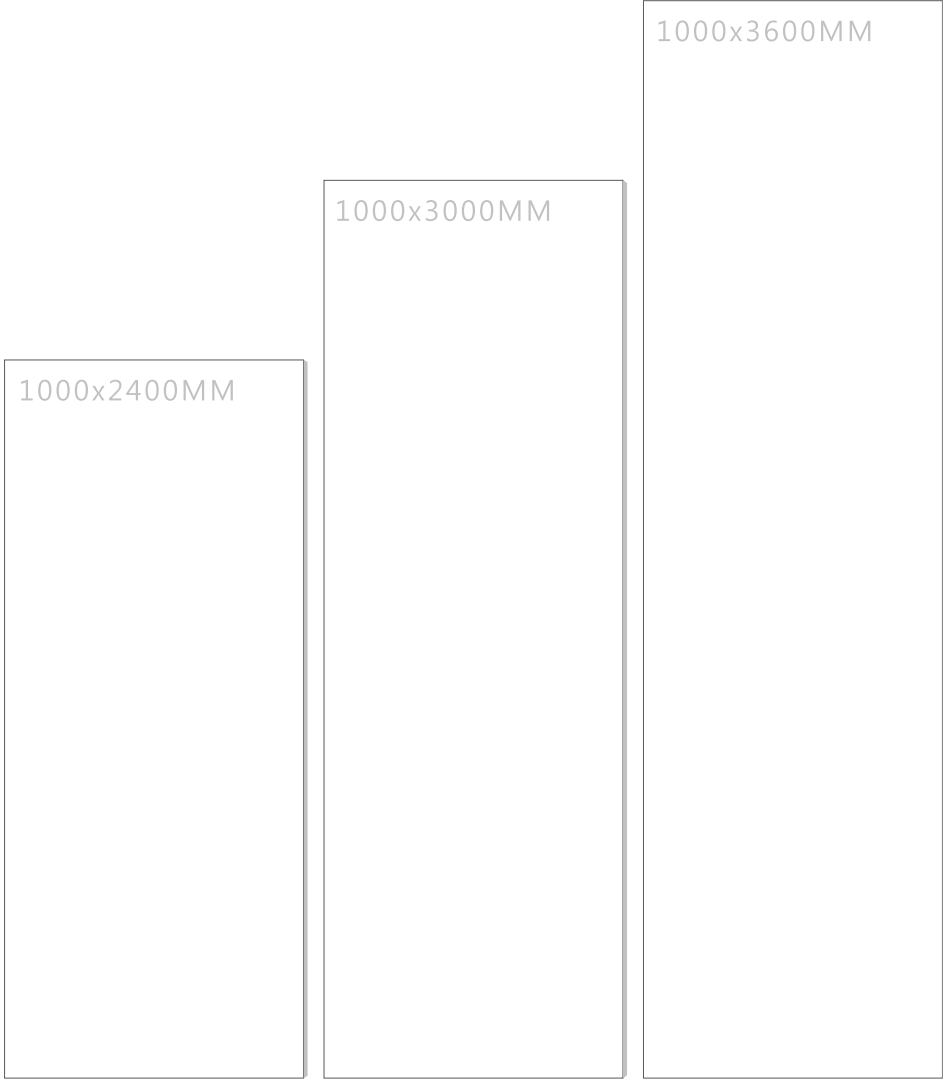


高寶建材國際股份有限公司

TEL:02-3365-2939 | FAX:02-2368-6295  
ADD:10648台北市大安區泰順街16巷30號  
LINE:amy24822 | 統編:52902557

2021.12





極致薄板 | 以薄觸感

4.5MM

EXTREMEYL LARGE BOARD WITH A THIN TOUCH

可接受訂製 / 寬度800-1200mm / 高度3600mm以下

# 板岩5大優勢

## BIG SLABS 5 ADVANTAGES



### 超大規格，效果大氣

高質板岩有1000×2400mm、1000×3000mm、1000×3600mm這三種行業最大規格的板岩。單塊板岩可以承載更多更流暢的紋理脈絡，不僅增加居家的空間感，還給人一種簡約大氣的感覺。

### 綠色環保，健康生活

高質板岩原材料選自純天然黏土與非金屬原料，讓居家更加綠色，生活更加健康。

### 切割自由，鋪貼方便

高質板岩可鋪貼的面積比傳統磁磚的面積要大，設計師可根據設計需求來任意切割板岩，運用靈活自如，達到一板多用的功能。

### 輕薄材質，搬運方便

高質板岩儘管擁有超大規格，厚度卻只有4.5毫米，材質輕盈，不僅可以節省鋪貼時間，還降低裝修成本。搬運更加省力，運輸較為方便。鋪貼實現“無縫連接”，減少藏汙納垢的縫隙，避免重複打掃的麻煩。

### 應用廣泛，靈活多變

高質板岩可應用於室內裝修與公設裝修，可鋪貼的地方有地板、牆面、樓梯，甚至通當茶几、書桌等。應用廣泛，組合搭配多樣，運用靈活多變，因此受到廣泛大眾的喜愛。



# 升級工藝 卓越性能

## UPGRADE PROCESS SUPERIOR PERFORMANCE

### 3D 立體塑印技術

運用先進的立體塑印技術，通過多層次、多角度的高清立體繪印，板岩表面的花紋與色彩更加細膩逼真，圖案更顯出層次感、立體感，栩栩如生，達到新的表現境界。

### 選用進口原料

選用歐洲進口優質原料，加工製成堅固板岩材身，具備防滑、防滲、防斷、防汙、耐磨等卓越性能，極大增加板岩的使用壽命，無需時常打理與更換，使用更省心。

### 材質綠色環保

高質密度的石材層面使得板體吸水率低於0.5%，能夠強力抵抗任何污垢的液體，加上坯底為無放射性的綠色環保原料，解決了石材的放射性與滲汙問題，低碳環保。

4.5mm

# INDEX

## 01 企業簡介

- P01-02 企業簡介 COMPANY PROFILE
- P03-04 產品優勢 PRODUCT ADVANTAGES
- P05 工藝性能 PROCESS PERFORMANCE

## 02 產品系列

- P07-10 純色(釉面) SOLID COLOR(GLAZED)
- P11-14 純色(通體) PURE COLOR(FULL BODY)
- P15-18 古堡 CASTLE
- P19-22 摩瑞 MERCURY
- P23-26 艾紳 ANCIENT WOOD
- P27-28 沃德 WOOD
- P29-30 微風 BREEZE
- P31-34 布紋 WALL PAPER
- P35-38 帝國 EMPIRE
- P39-40 高登 GOLDENAGE
- P41-42 鐵鏽 RUST
- P43-44 硅岩 SILICASTONE
- P45-46 威爾 WAVE
- P47-48 珍珠 PEARL
- P49-50 麻石 GRANITE
- P51-52 納布 NEBULA
- P53-54 時尚 STYLE SELECTIONS
- P55-56 線石 STONELINE
- P57-60 水泥 CEMENT
- P61-62 雲彩 CLOUD
- P63-64 卡拉拉(一組六面) CARRARA(SIX PATTERNS)
- P65-70 卡拉拉(對花) CARRARA(SYMMETRY)
- P71-72 卡拉拉(四組對花) CARRARA(FOUR PATTERNS)
- P73-74 卡拉拉(石組對花) CARRARA(TEN PATTERNS)
- P75-78 客訂品 CUSTOMIZED PRODUCT

## 03 技術手冊

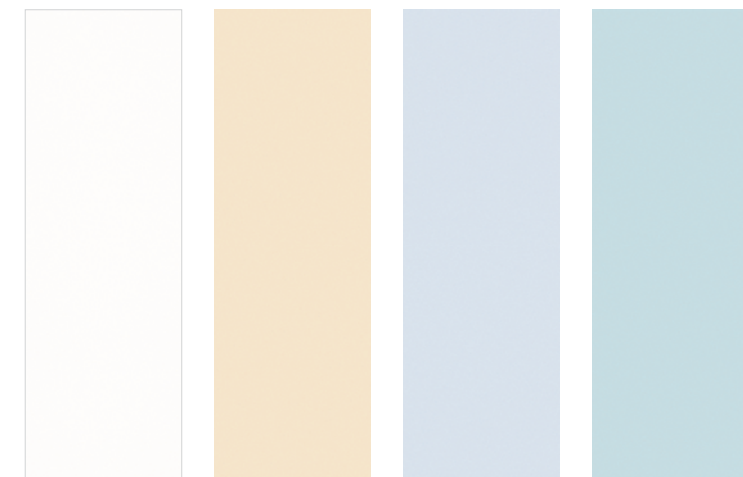
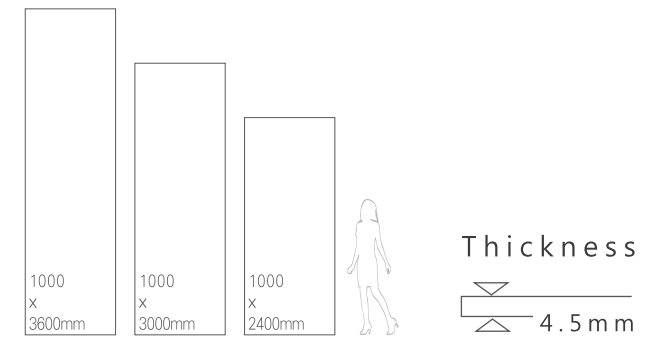
- P79-105 應用空間 APPLICATION SPACE
- P106 重點工程 KEY PROJECTS
- P79-105 產品總覽 PRODUCT OVERVIEW
- P79-105 施工說明 TECHNICAL DETAILS
- P79-105 技術參數 TECHNICAL PARAMETERS



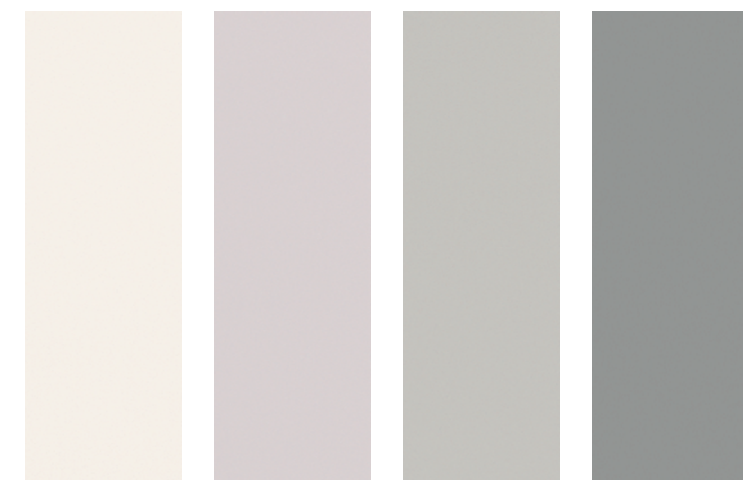
SOLID COLOR(GLAZED) / BSP 09 / 1000×3000MM

## 純色（釉面） SOLID COLOR(GLAZED)

size



BSP01    BSP08A    BSP05C    BSP07A



BSP01B    BSP05F    BSP05G    BSP25A

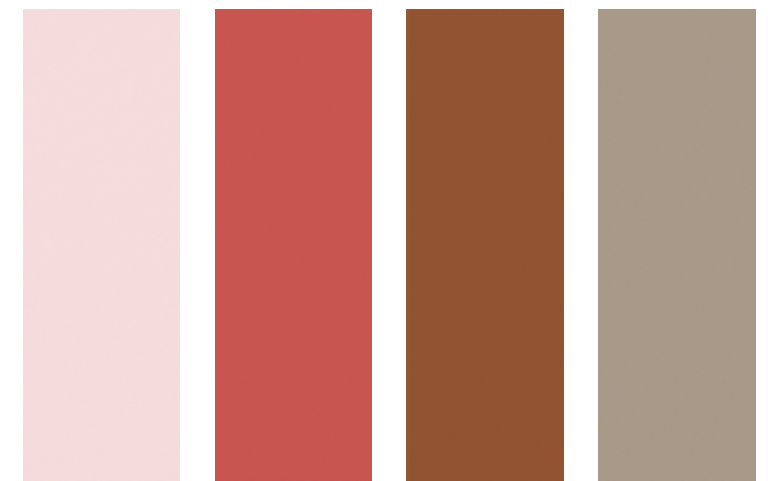
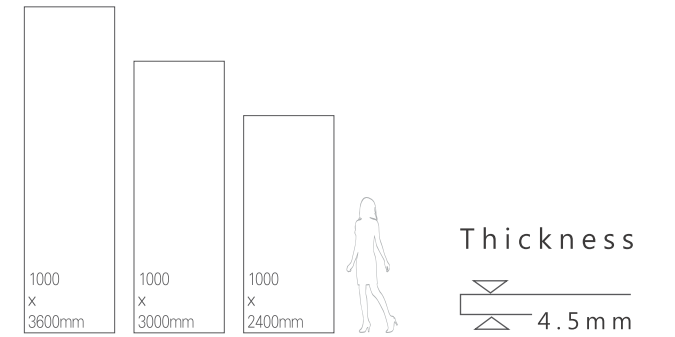




SOLID COLOR (GLAZED) / BSP 10A / 1000x3000MM

## 純色 (釉面) SOLID COLOR (GLAZED)

size



BSP03A

BSP06A

BSP06

BSP09



BSP05

BSP04

BSP07

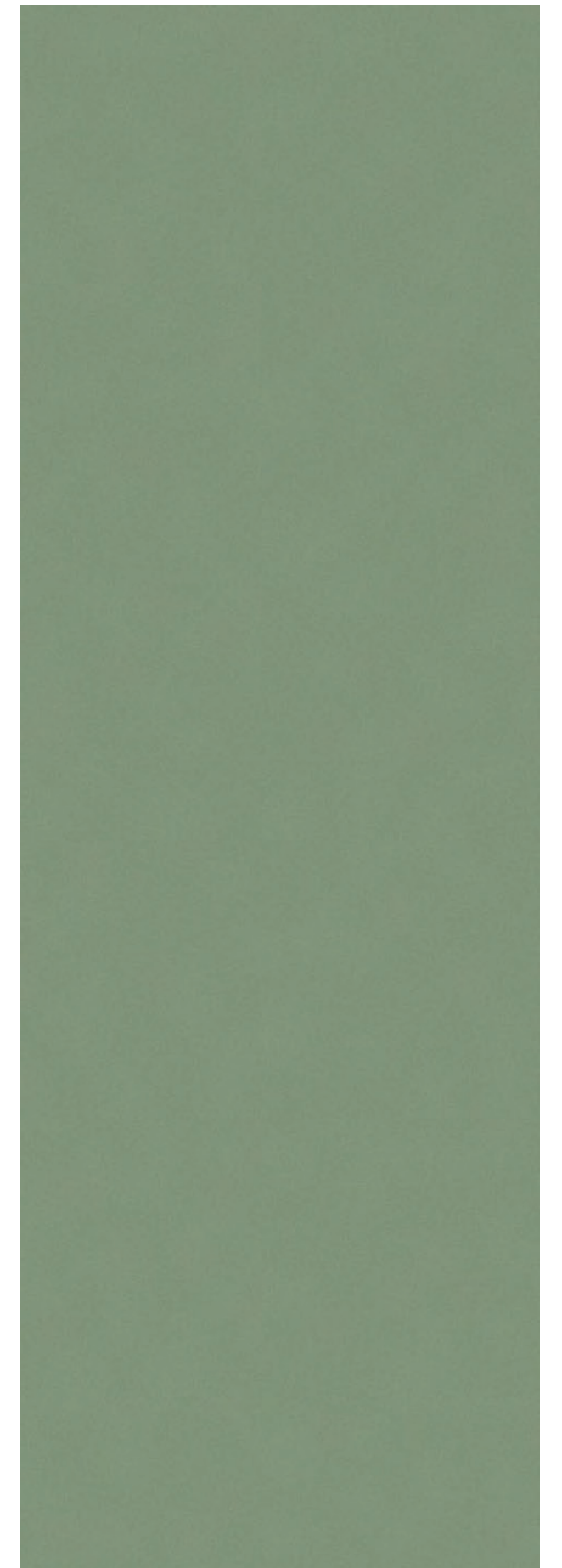
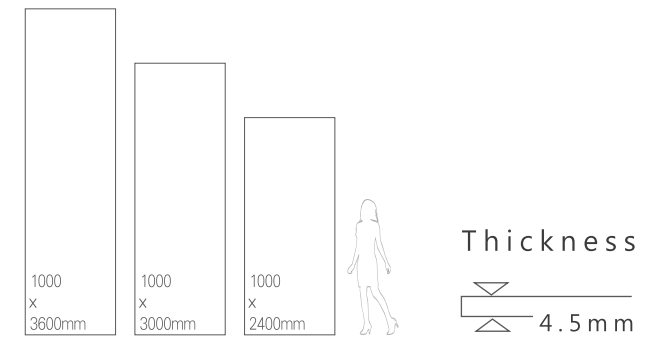
BSP10A



PURE COLOR(FULL BODY) / BSF 04+BSF25 / 1000×3000MM

## 純色 (通體) PURE COLOR(FULL BODY)

size





PURE COLOR(FULL BODY) / BSF 15+BSF19 / 1000×3000MM

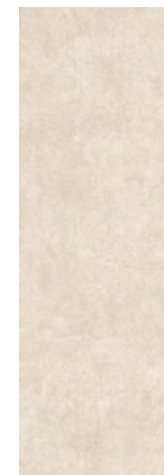
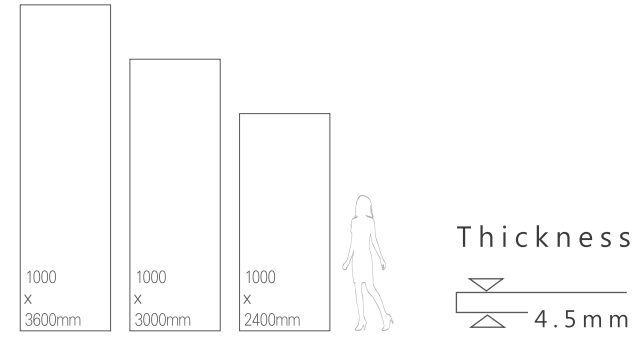




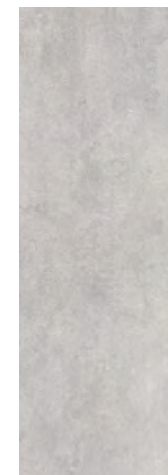
CASTLE / BSR 05+BSR10 / 1000×3000MM

## 古堡 CASTLE

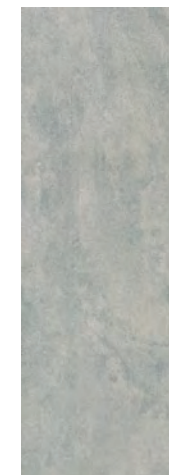
size



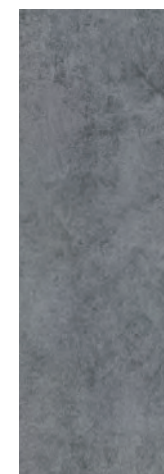
BSR02



BSR05



BSR15



BSR07



BSR04



BSR10





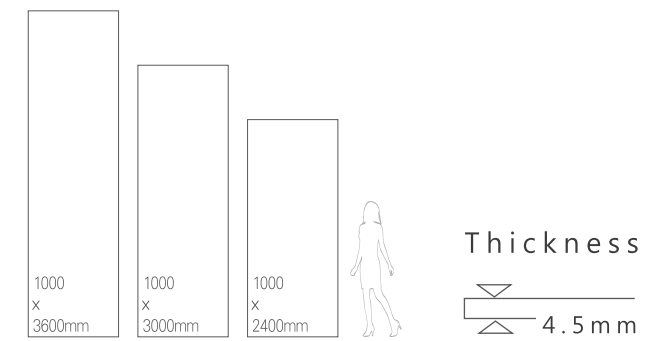
CASTLE / BSR 02 / 1000x3000MM



MERCURY / BMCM 08+BMCM10 / 1000×3000MM

## 摩瑞 MERCURY

size



BMCM08



BMCM05



BMCM09



BMCM15



BMCM25



BMCM10





LOUNGE ZONE

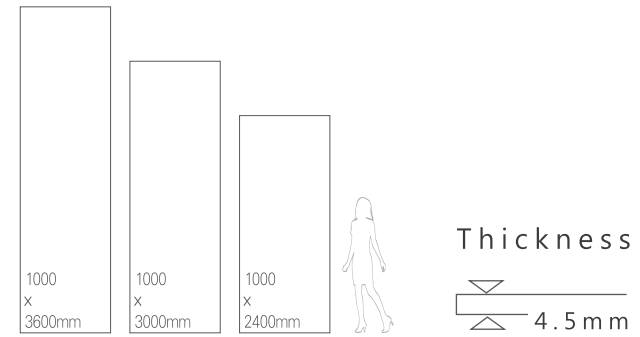
MERCURY / BMCM 08+BMCM15 / 1000x3000MM



ANCIENTWOOD / BSV06+BSV08 / 1000×3000MM

## 艾紳 ANCIENT WOOD

size



BSV05



BSV08



BSV09



BSV10



BSV19



BSV06





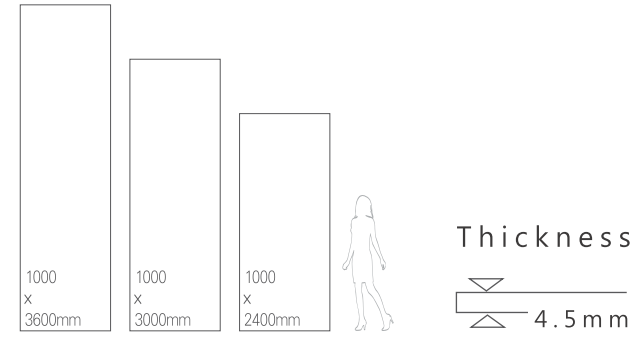
ANCIENT WOOD / BSV06+BSV08 / 1000x3000MM



WOOD / BSY03 / 1000×3000MM

## 沃德 WOOD

size



BSV01



BSV02



BSV03



BSV06



BSV08



BSV09

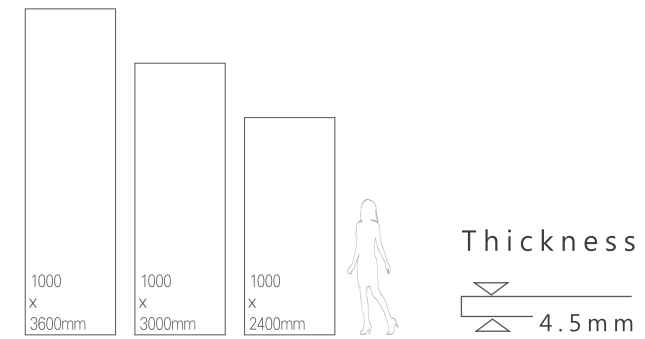




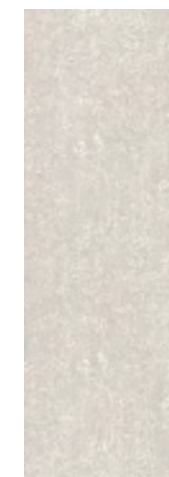
BREEZE / BSI05 / 1000×3000MM

## 微風 BREEZE

size



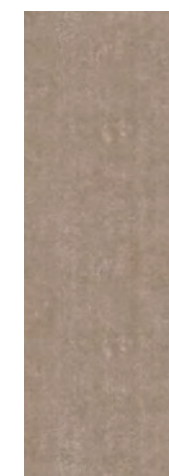
BSI02



BSI05



BSI05A



BSI06



BSI09



BSI10



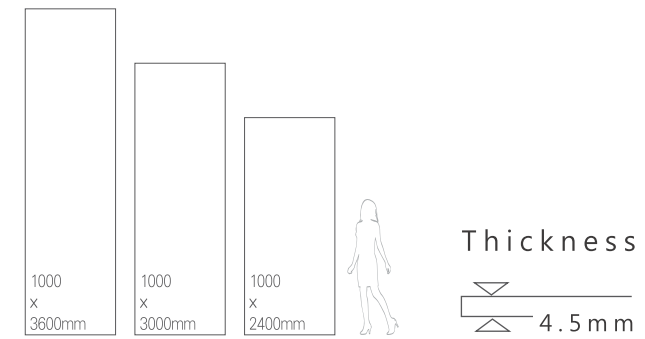




WALL PAPER / BSZ10 / 1000×3000MM

## 布紋 WALL PAPER

size



BSZ05   BSZ08   BSZ09   BSZ10





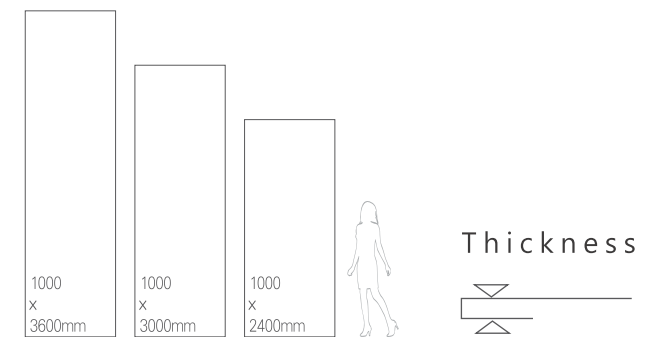
WALL PAPER / BSZ08 / 1000×3000MM



EMPIRE / BSD02+BSD10 / 1000×3000MM

## 帝國 EMPIRE

size



BSD01    BSD02    BSD05    BSD10





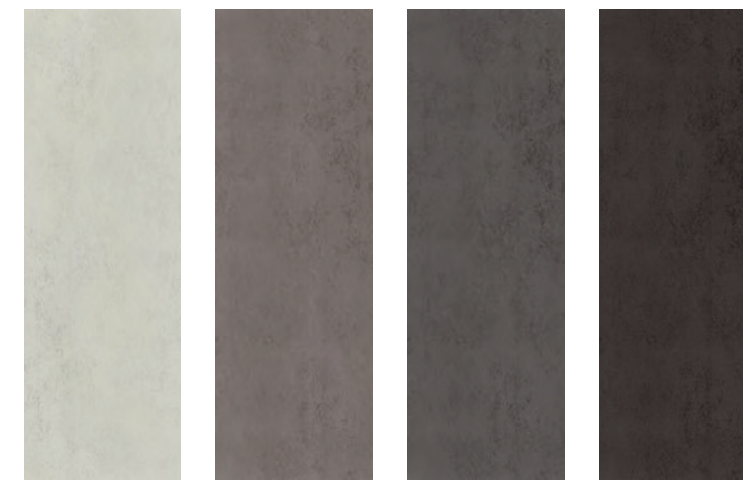
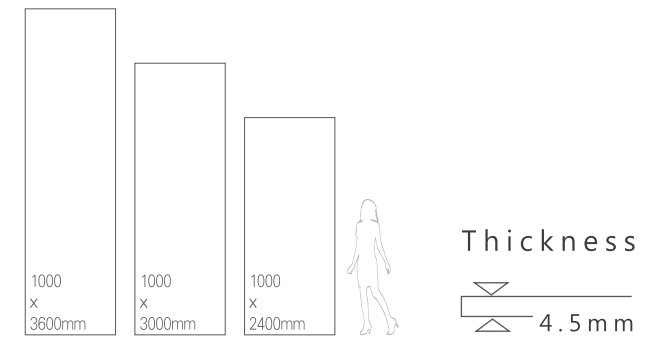
EMPIRE / BSD10 / 1000×3000MM



GOLDEN AGE / BGA09(F) / 1000×3000MM

## 高登 GOLDEN AGE

size



BGA05(F)   BGA09(F)   BGA10(F)   BGA06(F)

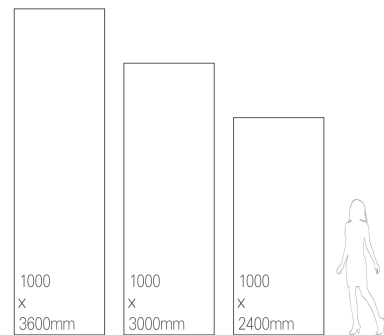




RUST / BSX06(F)+BSX07(F) / 1000×3000MM

## 鐵鏽 RUST

size



Thickness

4.5 mm

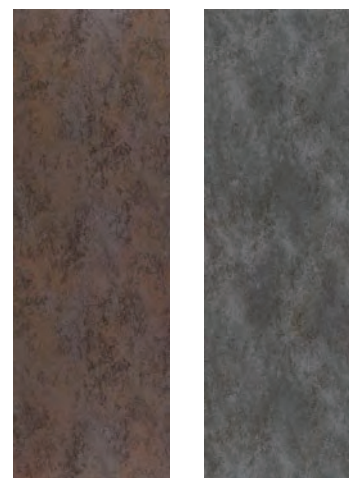


## ARTISTIC SPACE

The floor tile with unique texture sets off the whole space, and the design and arrangement of the modern space with both simplicity and line aesthetic sense, describes the most beautiful space with the least strokes, and presents a simple and extraordinary artistic effect.

獨具質感的地磚襯托起整個空間，兼具簡約與線條美感的現代空間的設計與布置，用最少的筆畫描寫最美的空間，呈現出簡而不凡的藝術效果。

RUST / BSX06(F)+BSX07(F) / 1000×3000MM



BSX06(F)

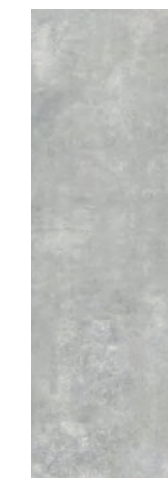
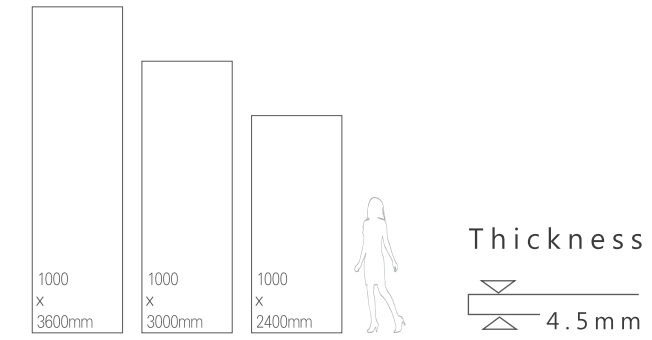
BSX07(F)



SILICASTONE / BSO05 / 1000×3000MM

## 硅岩 SILICASTONE

size



BSO05



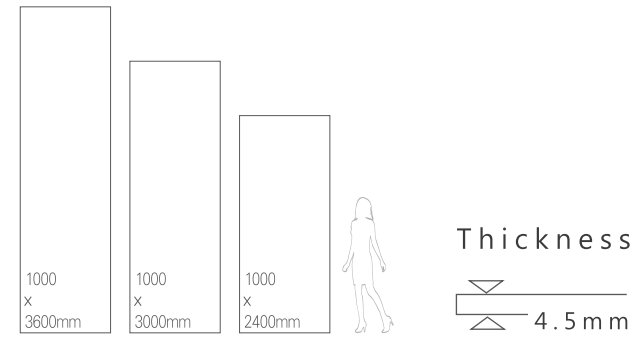
BSO15



WAVE / BSU10 / 1000×3000MM

## 威爾 WAVE

size



BSU01

BSU10



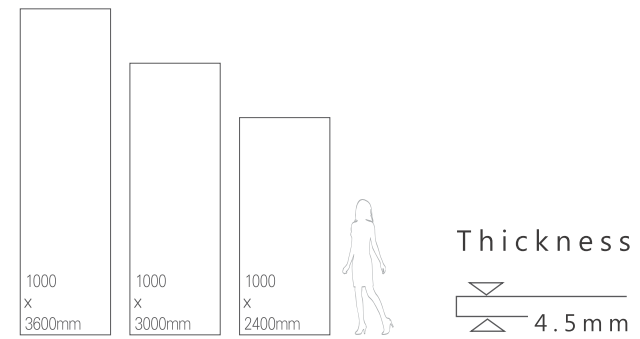




PEARL / BSG10B / 1000×3000MM

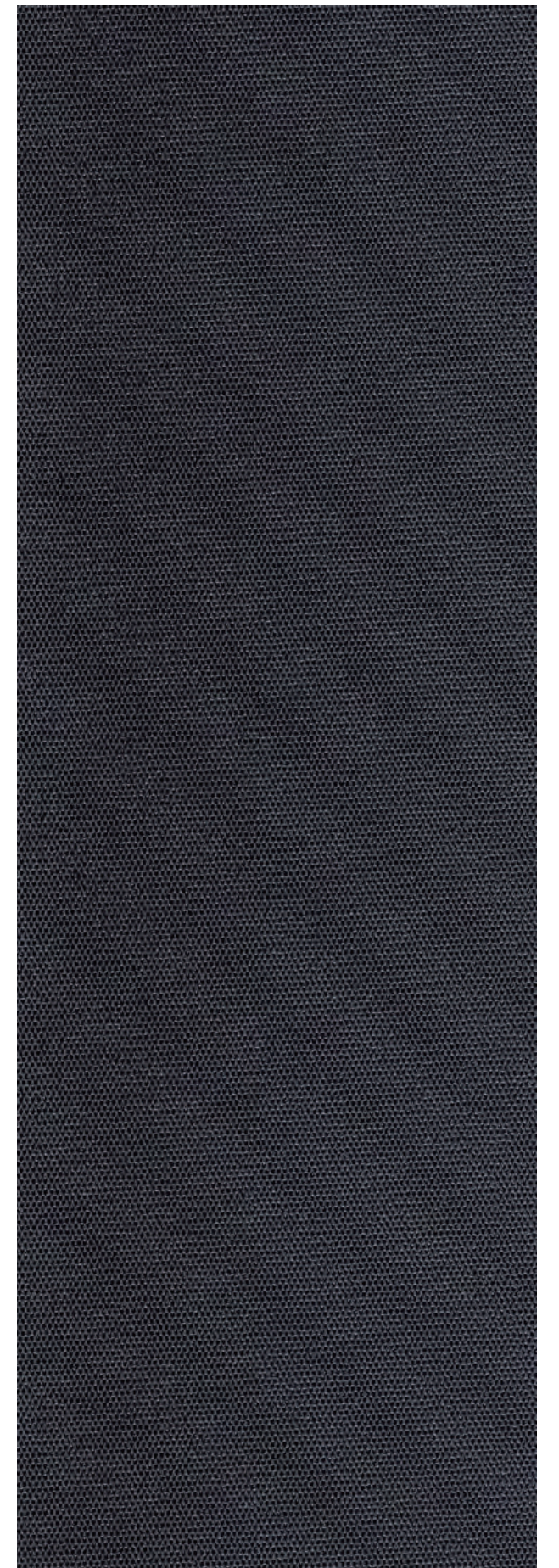
## 珍珠 PEARL

size



BSG01A

BSG10B

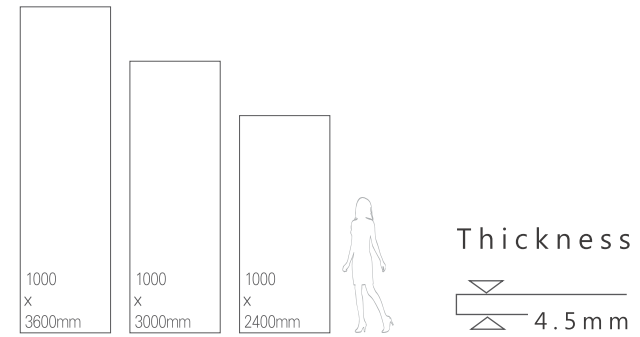




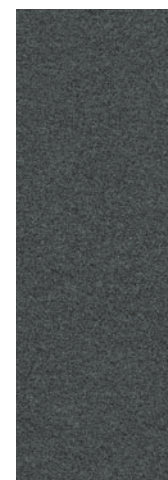
GRANITE / BSF08A / 1000x3000MM

## 麻石 GRANITE

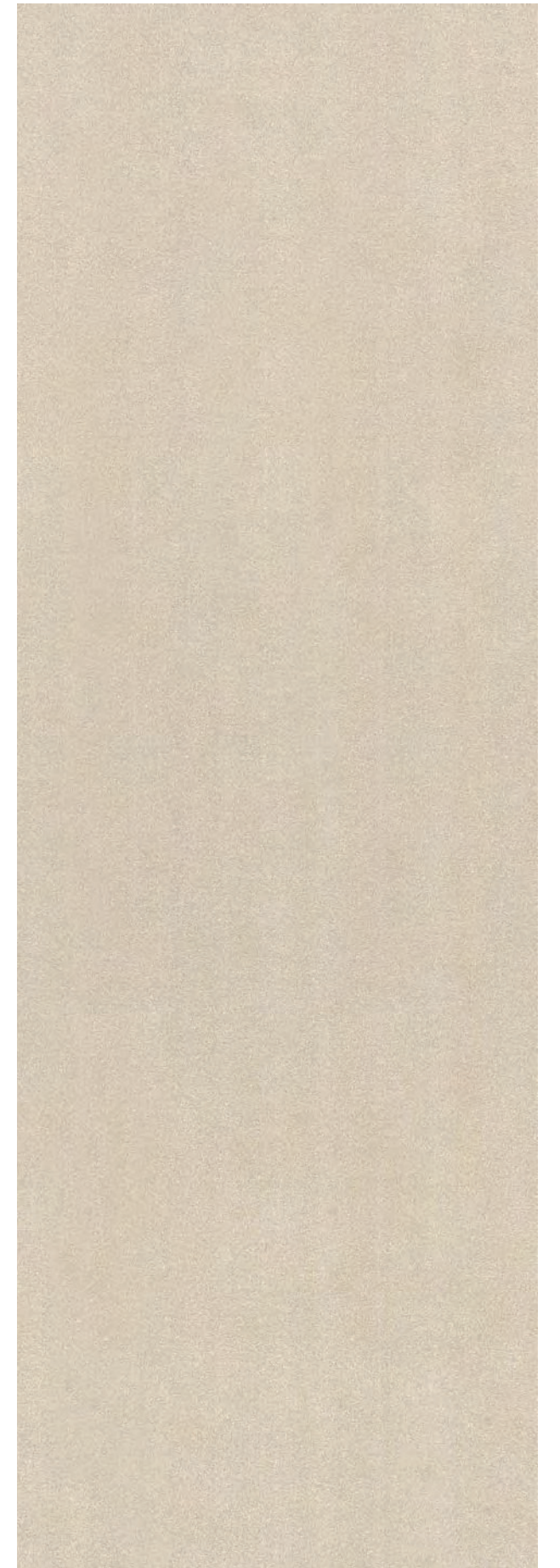
size



BSF08A



BSF10A

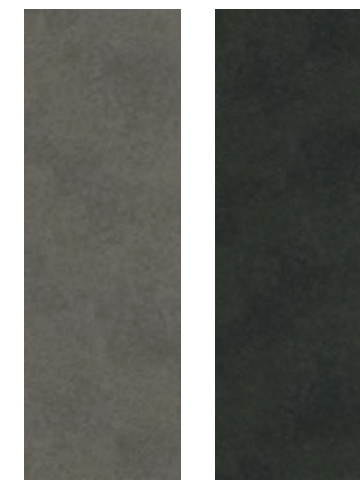
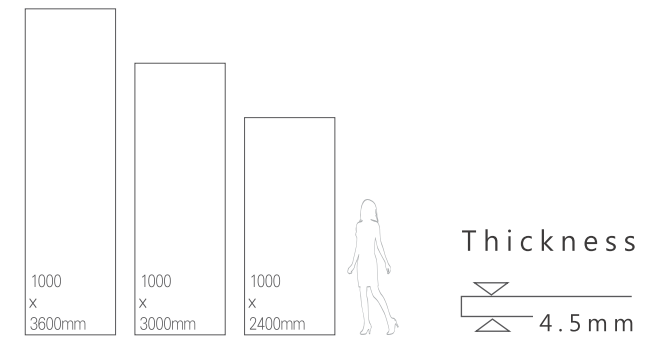




NEBULA / BNB09+BNB10 / 1000×3000MM

## 納布 NEBULA

size



BNB09

BNB10





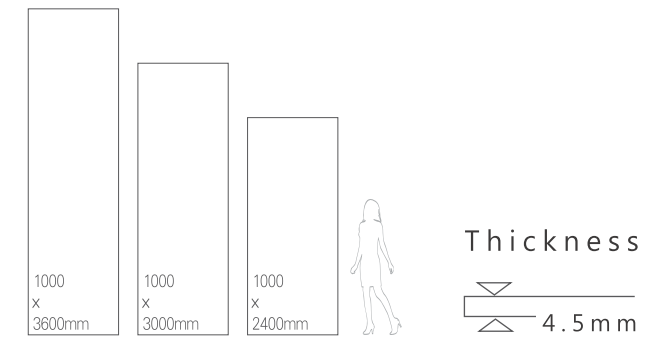
STYLE SELECTIONS / BSS03 / 1000×3000MM



STYLE SELECTIONS / BSS02 / 1000×3000MM

## 時尚 STYLE SELECTIONS

size



BSS03



BSS02

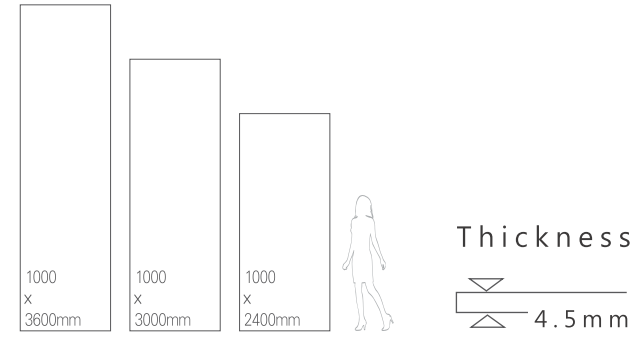




STONE LINE // BSN05A / 1000x3000MM

## 線石 STONE LINE

size



- 吸水率E<0.5%
- 高硬度
- 耐刮痕
- 抗凍
- 耐酸鹼
- 防火
- 超強耐擊
- 食品級表面
- 二次裝修
- 建築外牆
- 建築內牆
- 廚房及檯面
- 衛浴及檯面
- 餐檯/茶几
- 櫥櫃/衣櫃
- 室內外門



BSN08A



BSN05A

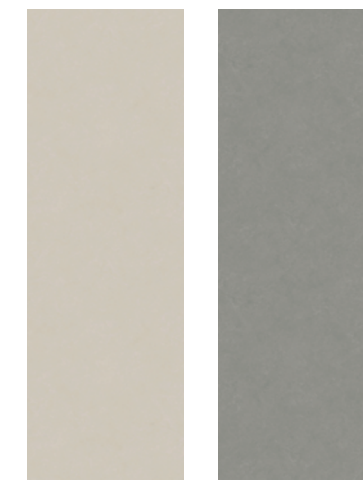
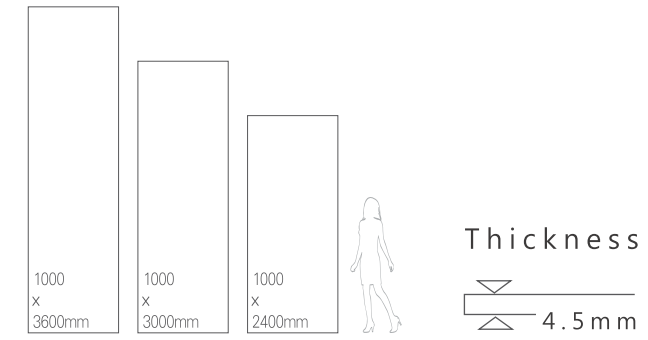




CEMENT / BSA05+BSA08 / 1000×3000MM

## 水泥 CEMENT

size



BSA08

BSA05





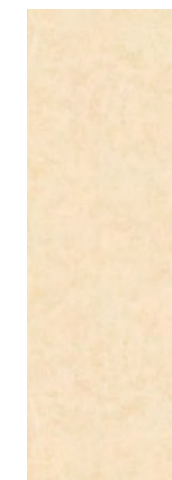
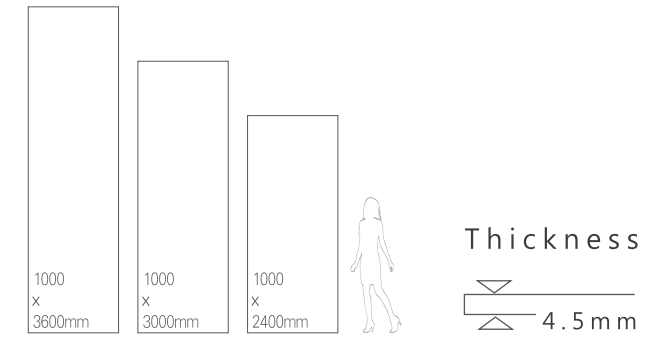
CEMENT / BSA08 / 1000x3000MM



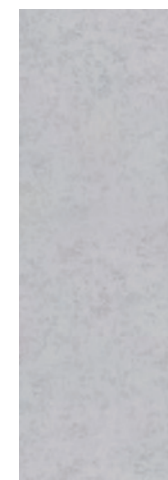
CLOUD / BSP15 / 1000×3000MM

## 雲彩 CLOUD

size



BSP 18



BSP 15



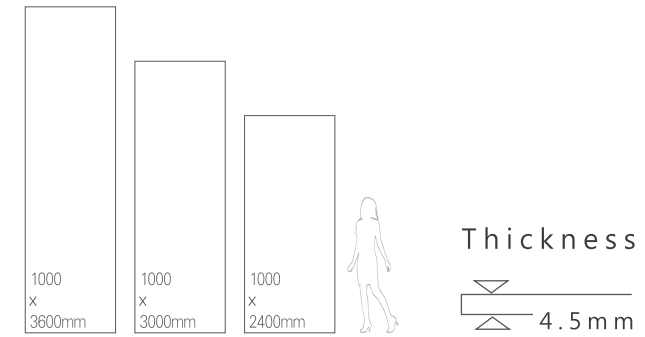




CARRARA(SIX PATTERNS) / BST01B / 1000×3000MM

## 卡拉拉 (一體六面) CARRARA (SIX PATTERNS)

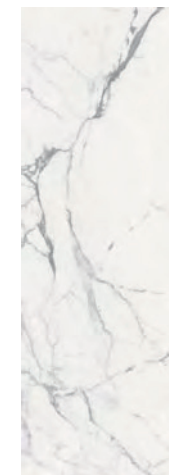
size



BST01B(A)



BST01B(B)



BST01B(C)



BST01B(D)



BST01B(E)



BST01B(F)

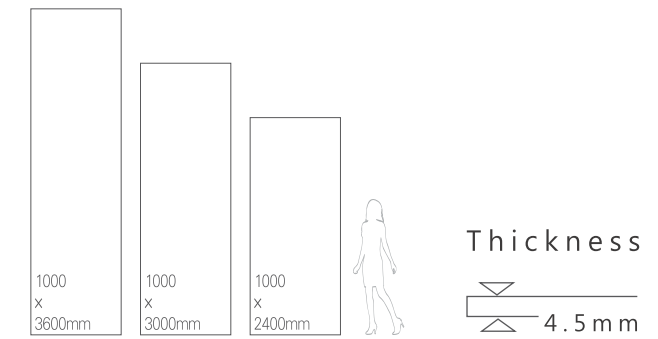




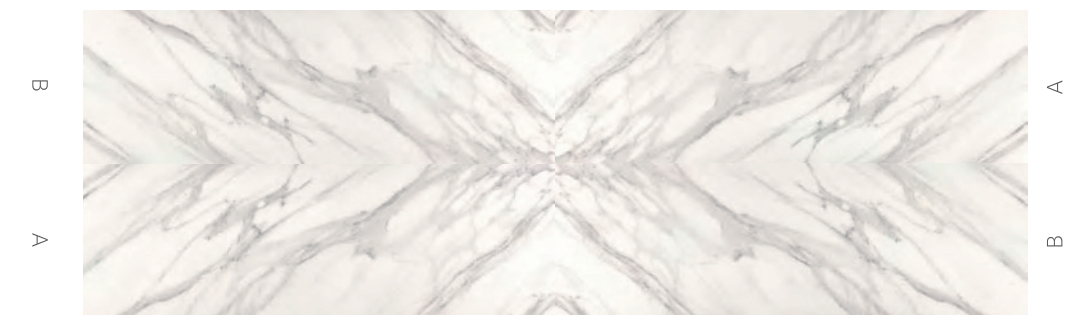
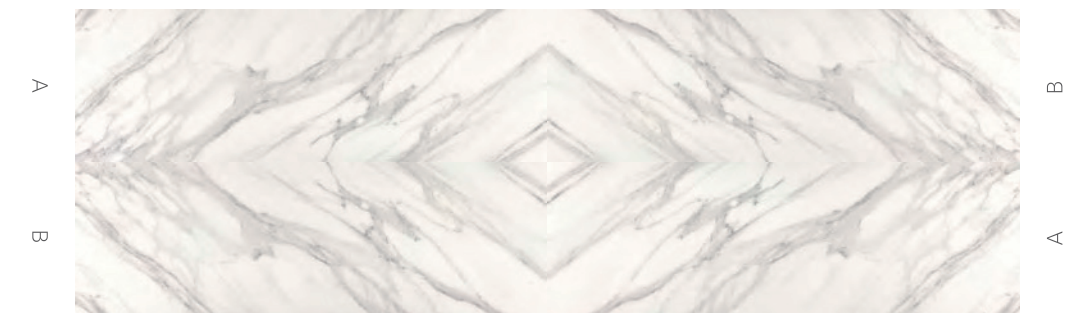
CARRARA(SYMMETRY) / BST 01C / 1000×3000MM

## 卡拉拉 (對拼) CARRARA(SYMMETRY)

size



BST01C(A) BST01C(B)





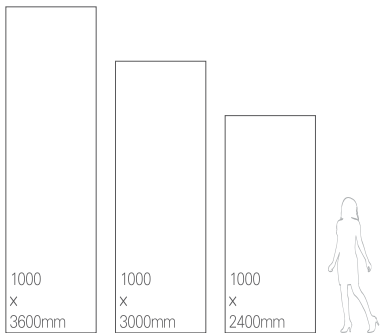
CARRARA(SYMMETRY) / BST 01C / 1000x3000MM



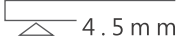
CARRARA(SYMMETRY) / BST 01F / 1000×3000MM

卡拉拉 (對拼) CARRARA(SYMMETRY)

size



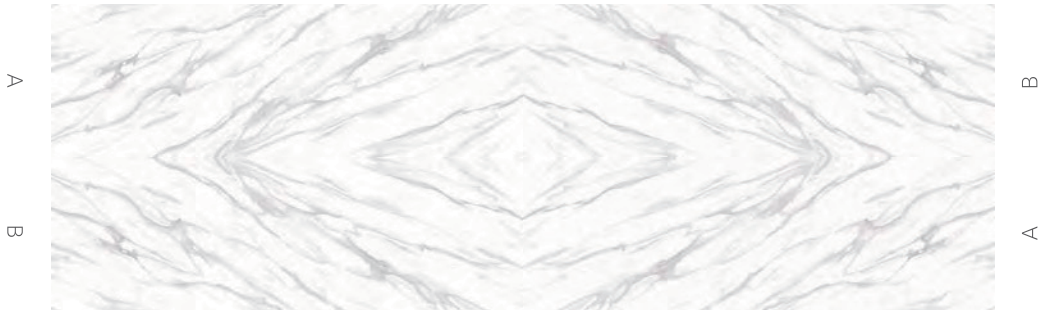
Thickness



- 
- 
- 
- 
- 
- 
- 
- 
- 
- 
- 
- 
- 
- 
- 
- 



BST01F(A) BST01F(B)

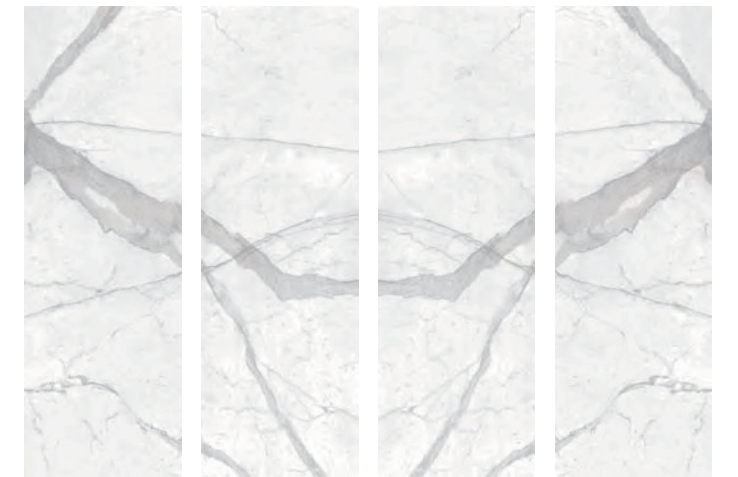
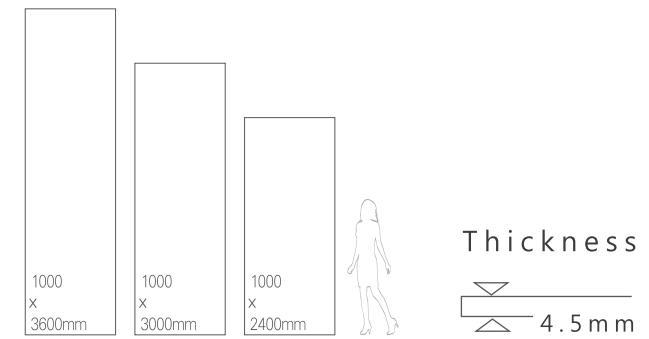




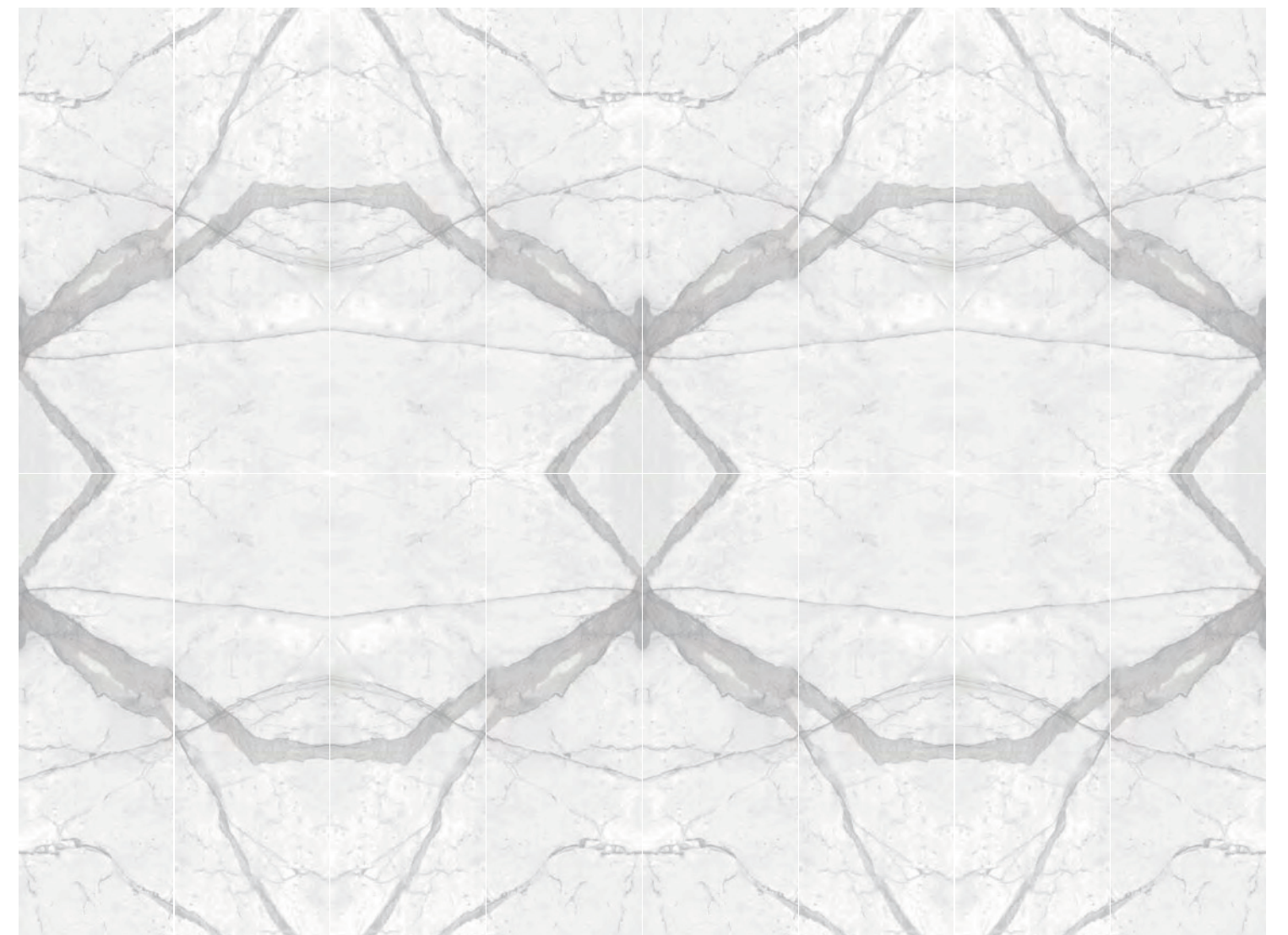
CARRARA(FOUR PATTERNS) / BST 01E / 1000×3000MM

## 卡拉拉 (對拼) CARRARA(SYMMETRY)

size



BST01E(A2) BST01E(A1) BST01E(B1) BST01E(B2)

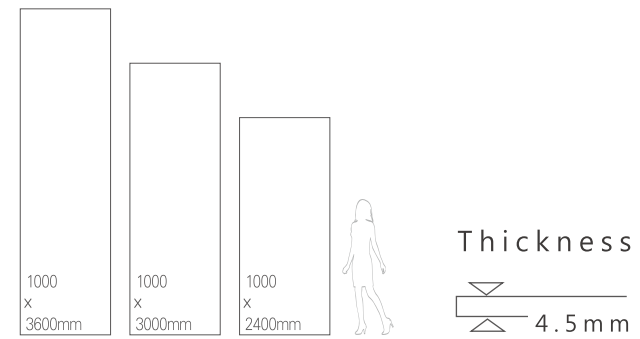




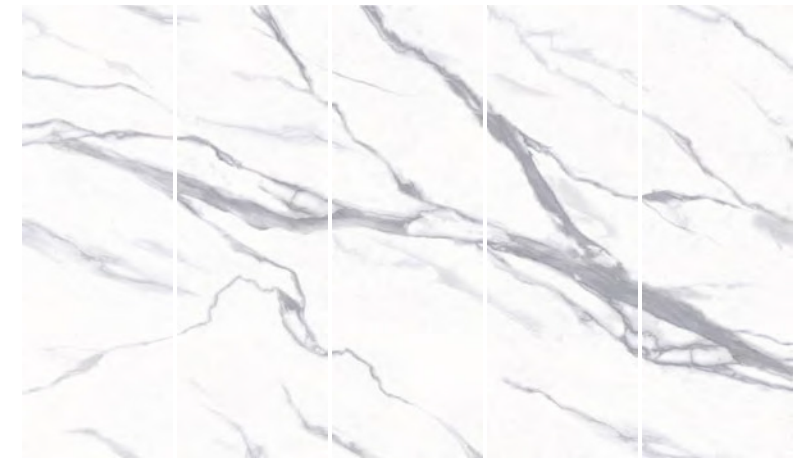
CARRARA(TEN PATTERNS) / BST 01D / 1000×3000MM

## 卡拉拉 (對拼) CARRARA(SYMMETRY)

size



- 吸水率E<0.5%
- 高硬度
- 耐刮磨
- 抗染
- 耐酸鹼
- 防火
- 超強耐用
- 食品級表面
- 二次裝修
- 建築外牆
- 建築內牆
- 廚房及衛浴
- 衛浴及樓面
- 餐館、茶几
- 櫥櫃、衣櫃
- 室內外門



BST01D(A) BST01D(B) BST01D(C) BST01D(D) BST01D(E)



CARRARA(TEN PATTERNS) / BST 01D / 1000×3000MM



BST01D(A) BST01D(B) BST01D(C) BST01D(D) BST01D(E) BST01D(E1) BST01D(D1) BST01D(C1) BST01D(B1) BST01D(A1)



CUSTOMIZED PRODUCT / BSL 02 / 1000×3000MM

客訂品 CUSTOMIZED PRODUCT

size

Thickness 4.5mm

吸水率E<0.5% 高硬度 耐刮擦 抗凍 耐酸鹼 防火 超強耐劃 食品級表面  
 二次裝修 建築外牆 建築內牆 廚房及檯面 衛浴及檯面 餐檯/茶几 櫃檯/衣櫃 室內外門

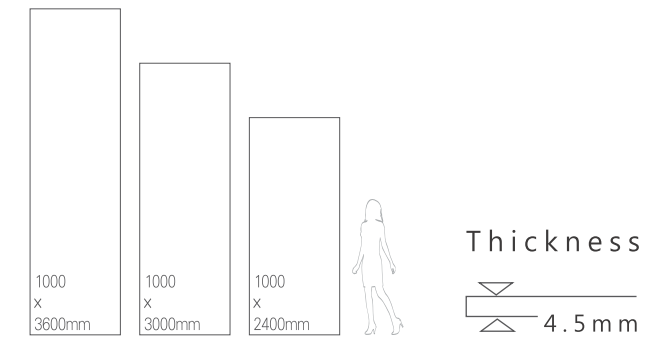
BST01H BST01G BSE01 BSE01A BSP01A BSJ05A  
 BSA05A BSN02A BSL02 BSA05C BSA05B BSF05A



CUSTOMIZED PRODUCT / BSF 10B / 1000×3000MM

## 客訂品 CUSTOMIZED PRODUCT

size



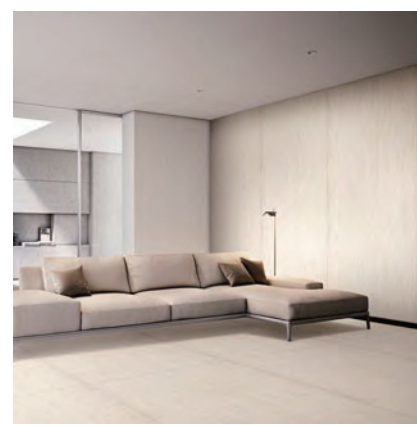


# 磁磚薄板應用空間 BIG S APPLICATION SPACE

Modern space design stresses the beauty and functionality of space. And material as the material of space decoration, not only need to have outstanding performance, the scope of application space is also important. Sanrong ceramic board, with humanized design, excellent material, multi-function space application, is a special ceramic board for space. Suitable for home, office, medical, real estate, shopping malls, Public clothing, home, design, construction, 9 major living places. A big board can be used for more space, making every place as comfortable as an imager, adding more fun to life.

現代空間設計，講究空間的美觀性與功能性。而材質作為空間裝飾的材料，不但需要有卓越的性能，應用空間的範圍同樣重要。·擁有人性化的設計，優良的材質，多樣的空間應用，是為空間專門打造的磁磚薄板，適用於家居、辦公、醫療、地產、商場、公裝、設計、建築8大生活場所。一種大板，可以實現更多的空間用途，將每一個場所都打造成像家一樣舒適的地方，為生活增添更多的樂趣。

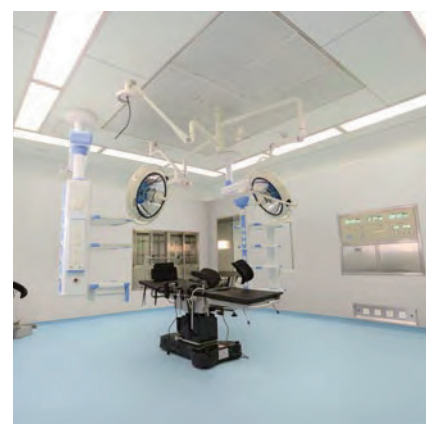
家居篇 Home articles



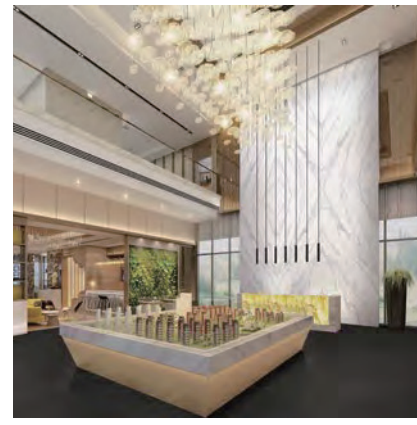
辦公篇 Office articles



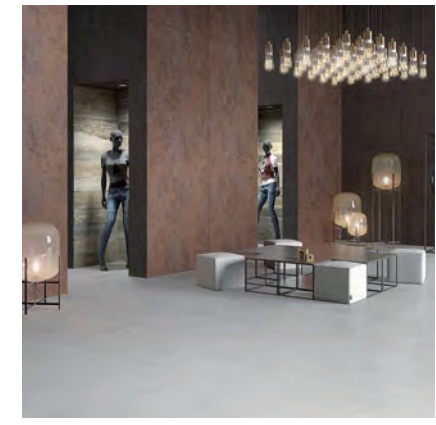
醫療篇 Medical articles



建案篇 Estate article



商空篇 Shopping articles



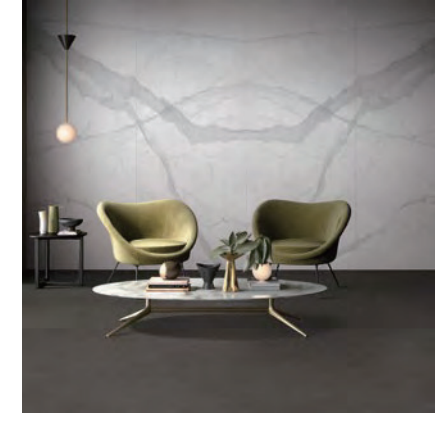
公設篇 Public articles



傢俱篇 Furniture articles



設計篇 Design articles



建築篇 Building articles



# ELEGANT STYLE

Simple techniques to create a special texture of the space, the color of the unified material into it, further improve the style and grade of space, visual effects more outstanding.

簡約的手法打造出質感非凡的空間，將色彩統一的材質融入其中，進一步提升了空間的格調與檔次，視覺效果更為出眾。



STONE LINE / BSN05A / 1000×3000MM



STYLE SELECTIONS / BSS03 / 1000×3000MM



CARRARA / BST01C / 1000×3000MM



CARRARA(SIX PATTERNS)/ BST 01B / 1000×3000MM

# MODERN MINIMALISM

Simple and uniform tonal decoration, so that public areas of vision open.  
Modern very strong space, simple and beautiful lines of large decorative layout,  
reflecting the overall design of personality requirements.

簡單統一的色調裝飾，使公共地方視野開闊。現代感十分強烈的空間，簡單  
而富有線條美的大板裝飾佈置，體現出整體設計對個性的要求。

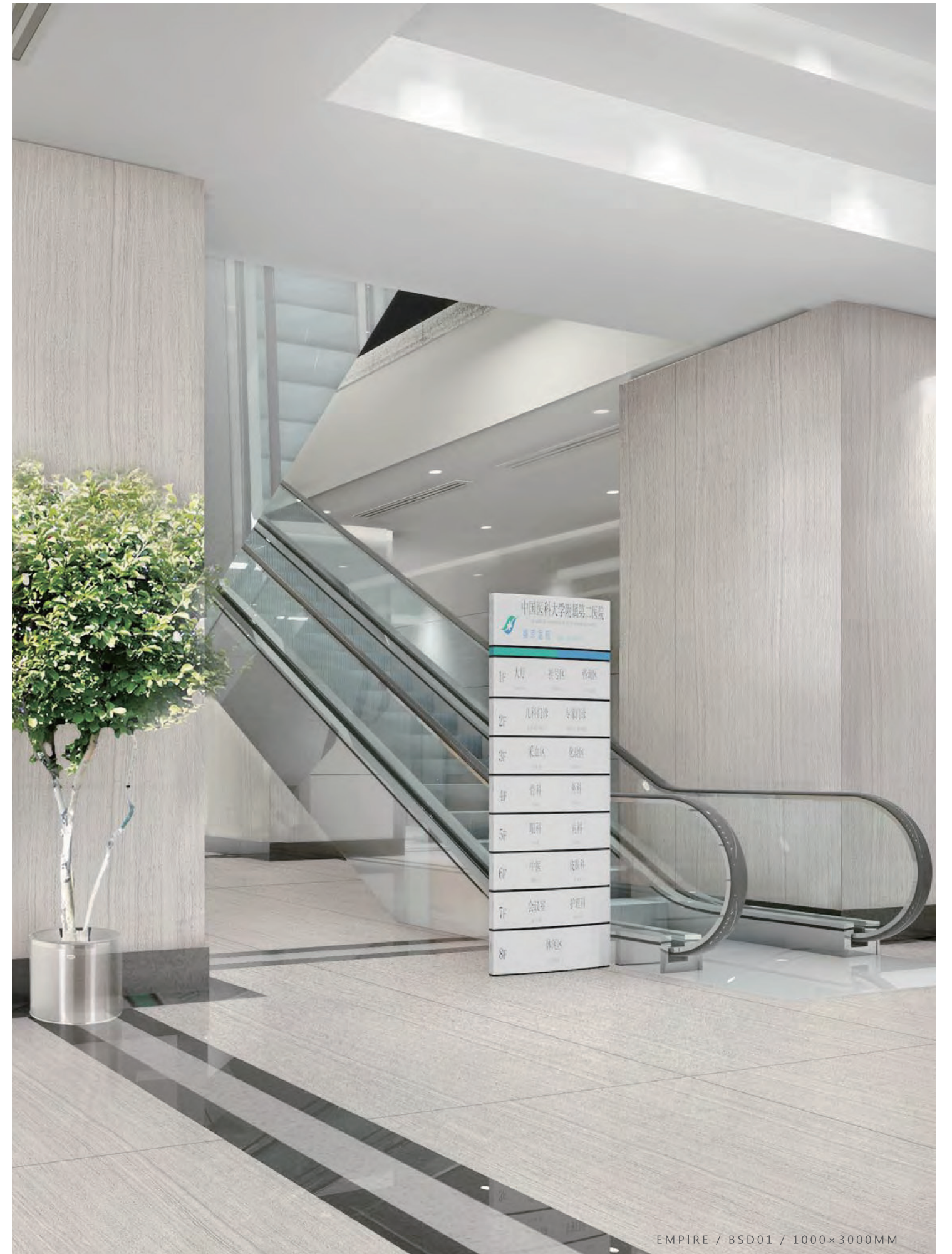




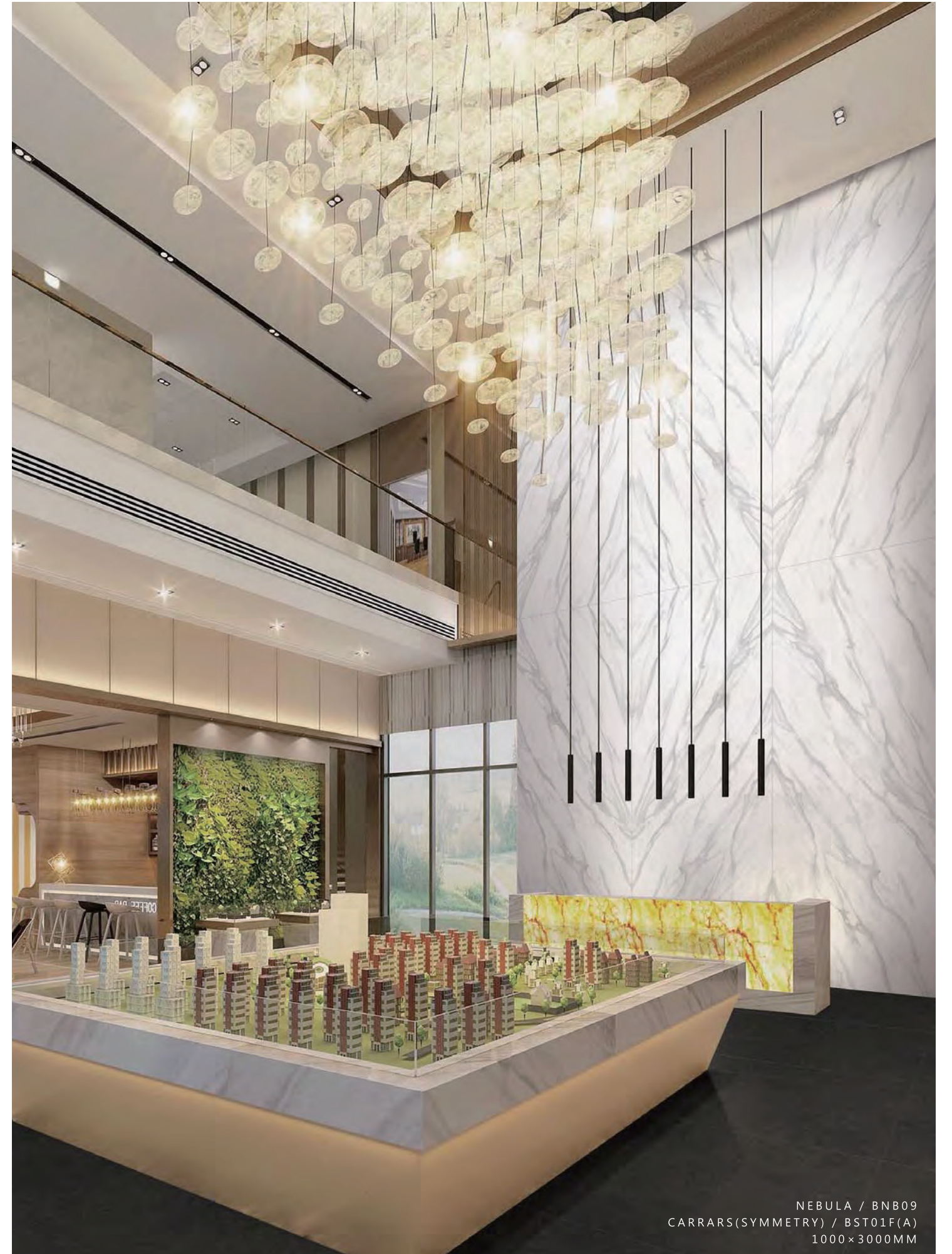
# VISUAL EXPERIENCE

The overall space of the hospital is used to represent pure, elegant white as the main color, multi element fusion of this beautiful and generous fashion space, the visual effect is more outstanding.

醫院的整體空間採用了純潔、端莊的白色作為主色，多元素融合出這個美觀大方的時尚空間，視覺效果更為出眾。



# LEGANT DECORATION



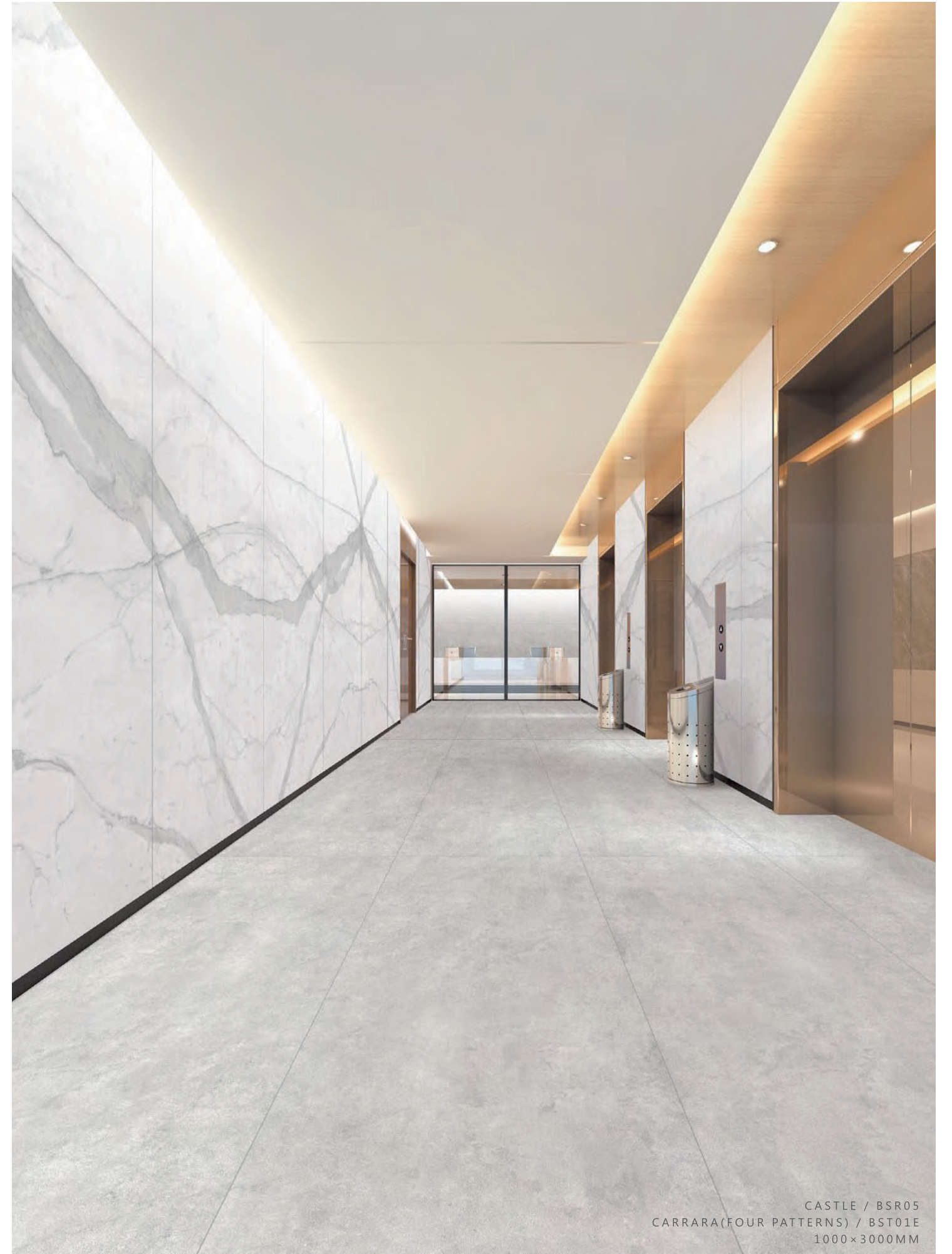
# ELEGANT FASHION

The multi-element fusion creates this beautiful and generous fashion space, displays the modern style charm, lets the person want to relax the tight body and mind, understands this modern high quality life comfortable rhythm.

多元素融合打造出了這個美觀大方的時尚空間，表現出現代風格的魅力，讓人想要放鬆緊繃的身心，體會這現代優質生活的舒適節奏。



GOLDEN AGE / BGA05(F)+BGA06(F)  
RUST / BSX06(F)  
1000×3000MM



CASTLE / BSR05  
CARRARA(FOUR PATTERNS) / BST01E  
1000×3000MM



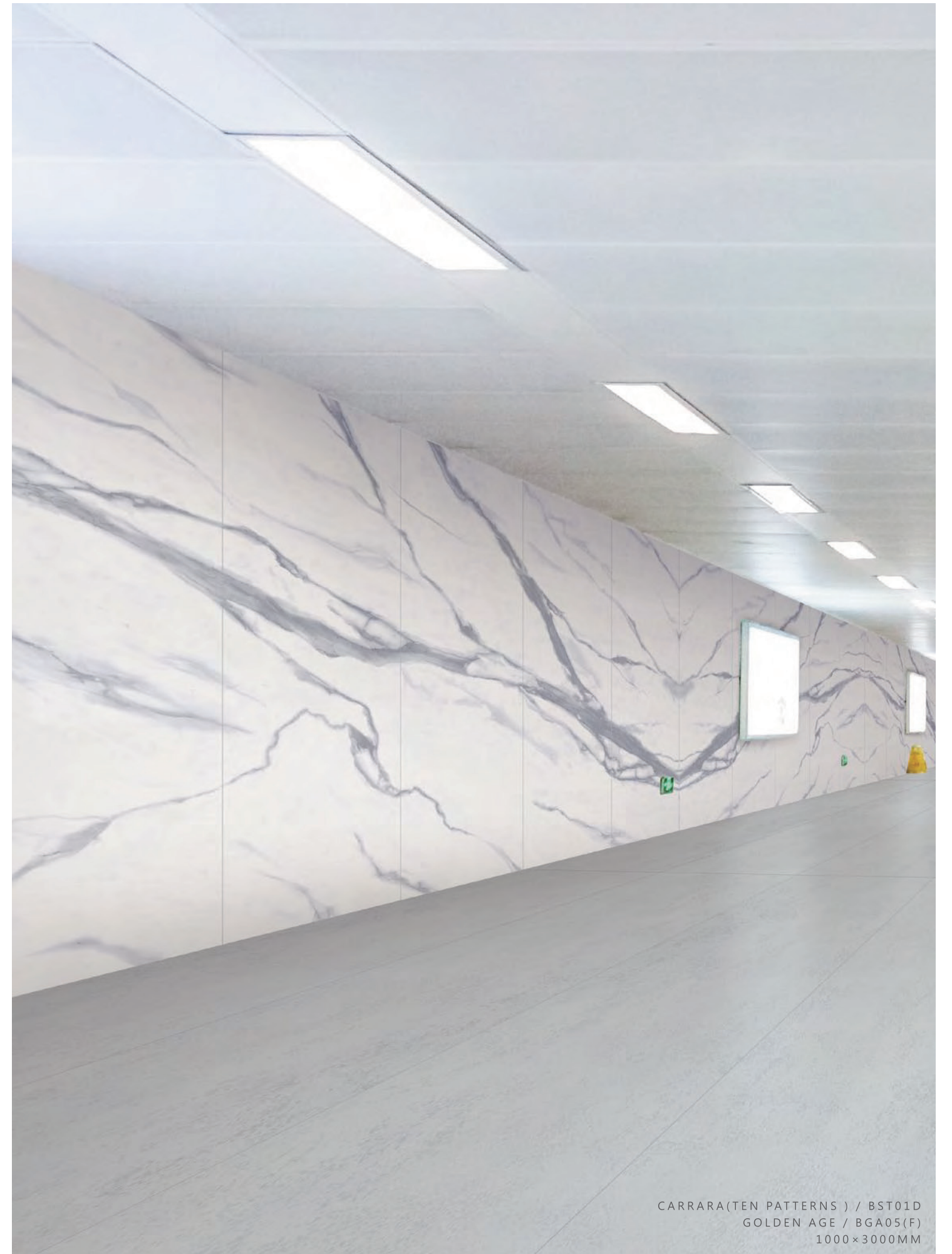
# MODERN SPACE

The beautiful board matches the light and shadow effect, which makes the color and texture of the space more charming. Every detail accords with the modern minimalism style.

矜美的薄板搭配上光影效果，令空間的色澤與質感倍加迷人，每一個細節，都符合現代極簡主義的風格。



MERCURY / BMCM05+BMCM08 / 1000×3000MM



CARRARA(TEN PATTERNS) / BST01D  
GOLDEN AGE / BGA05(F)  
1000×3000MM

# ROMANTIC ROOM

In the clean and clean space, both the modern personality of the big board, but also rich in the antique color of household supplies, the two do not show sudden, but also highlight its charming, create a harmonious, natural, romantic room atmosphere.

在乾淨明潔的空間之中，既有現代個性的薄板，也富有復古顏色的家居用品，兩者不顯突兀，更突顯它的迷人，營造出和諧、自然、浪漫的居室氛圍。



SILICASTONE / BSO05+BSO15  
CUSTOMIZED PRODU / BSNM10C  
1000×3000MM



CARRARA (SIX PATTERNS) / BST01B  
WOOD / BSY08  
1000×3000MM

# ARTISTIC FLAVOR

A very strong sense of modern sense of space, simple and rich decorative layout, with the rich artistic flavor of the collection, for space added the beauty of fashion and art.

現代感十分強烈的空間，簡單而富有線條美的裝飾布置，再搭配富有藝術氣息的珍藏品，為空間添加了時尚與藝術的美感。



CARRARA(SYMMETRY) / BST01F / 1000×3000MM



ANCIENT WOOD / BSV19  
CARRARA (SIX PATTERNS) / BST01B  
1000×3000MM

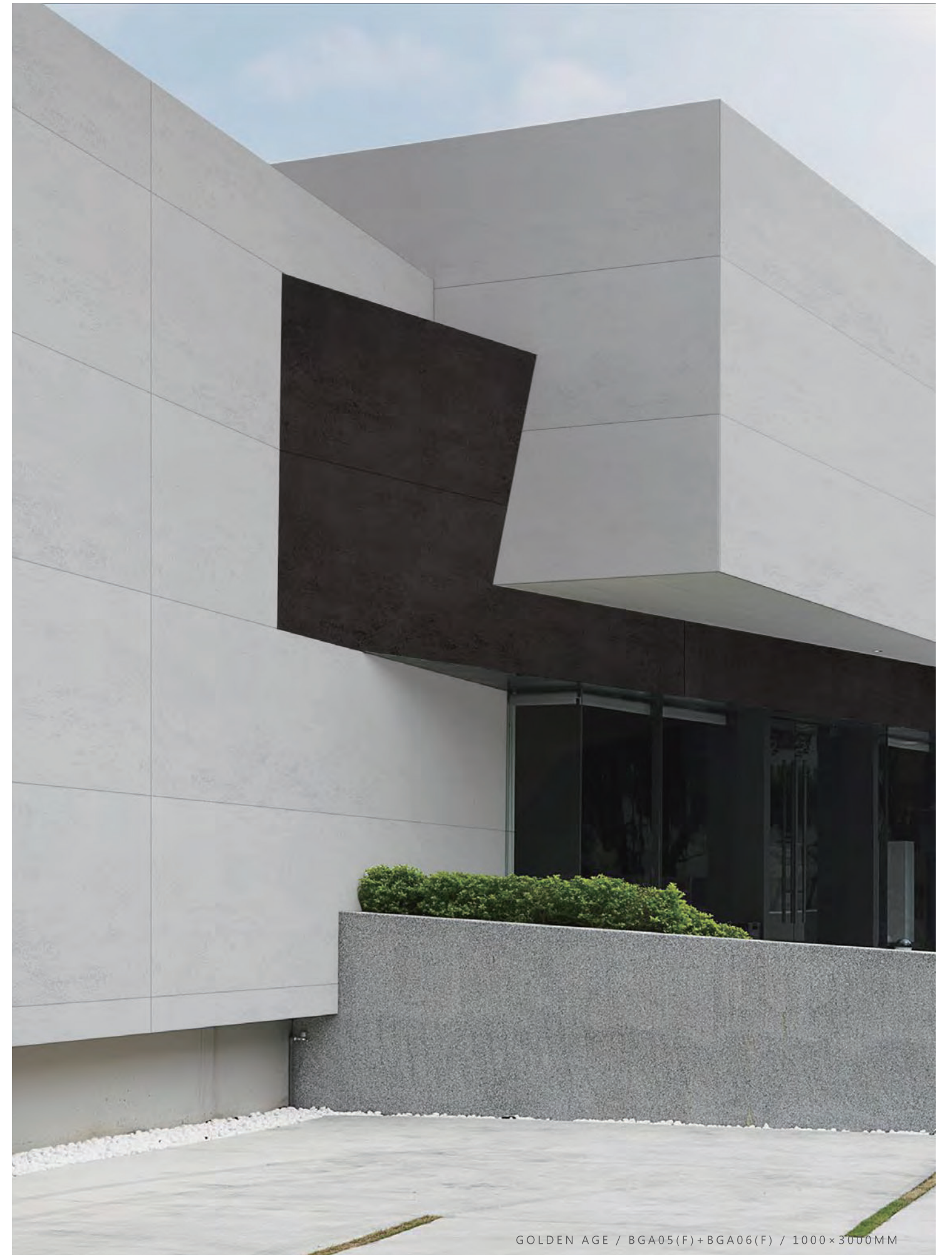


NEBULA / BNB09  
CARRARA(FOUR PATTERNS) / BST01E  
1000×3000mm

# WALL DECORATION

The exterior wall decorated with the elegant and elegant board has a concise line beauty, the outer outline of the building is perfectly presented, the whole is more stereoscopic, and the modern sense of fashion is rich.

用曼美高雅的薄板裝飾的外牆，擁有簡練的線條美，將建築的外輪廓完美地呈現出來，整體更加立體，富有現代時尚感。

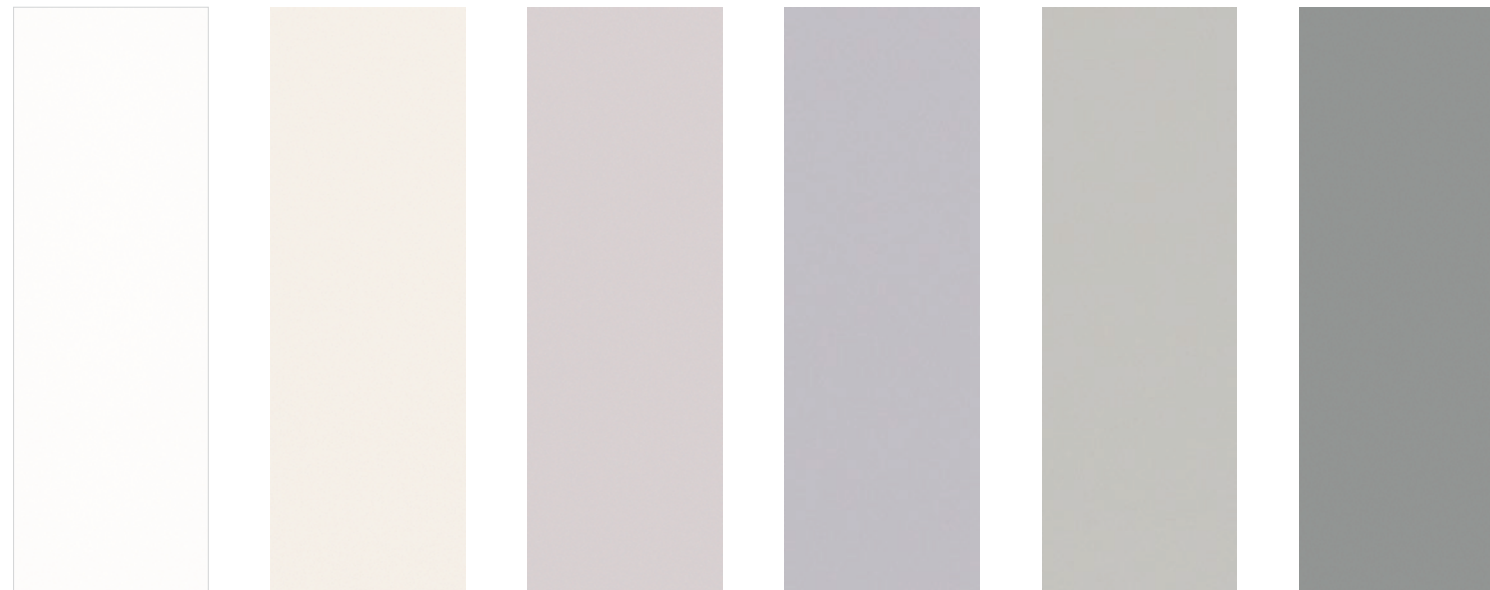


# 產品總覽 PRODUCT OVERVIEW

1000x2400MM / 1000x3000MM / 1000x3600MM



純色(釉面)  
SOLID COLOR(GLAZED)



BSP01    BSP01B    BSP05F    BSP05G    BSP05    BSP25A

純色(釉面)  
SOLID COLOR(GLAZED)



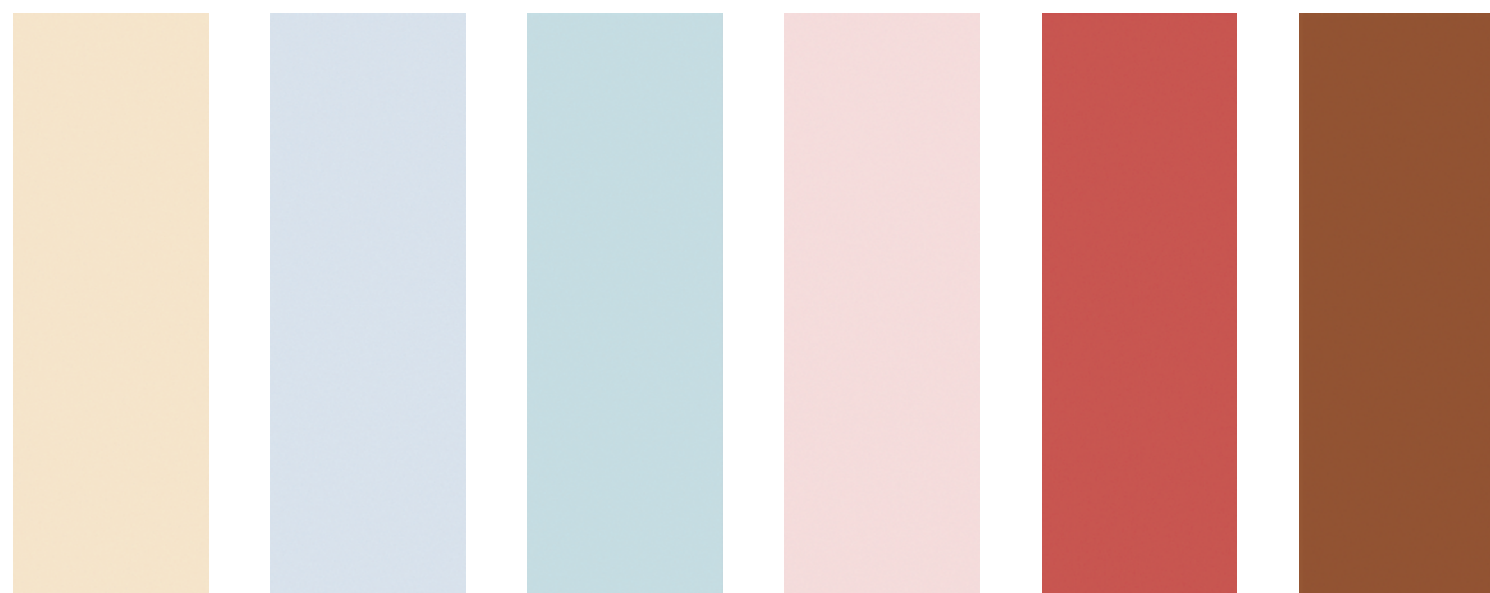
BSP09    BSP04    BSP07    BSP10A

純色(通體)  
PURE COLOR(FULL BODY)



BSF15    BSF25

純色(通體)  
PURE COLOR(FULL BODY)



BSP08A    BSP05C    BSP07A    BSP03A    BSP06A    BSP06



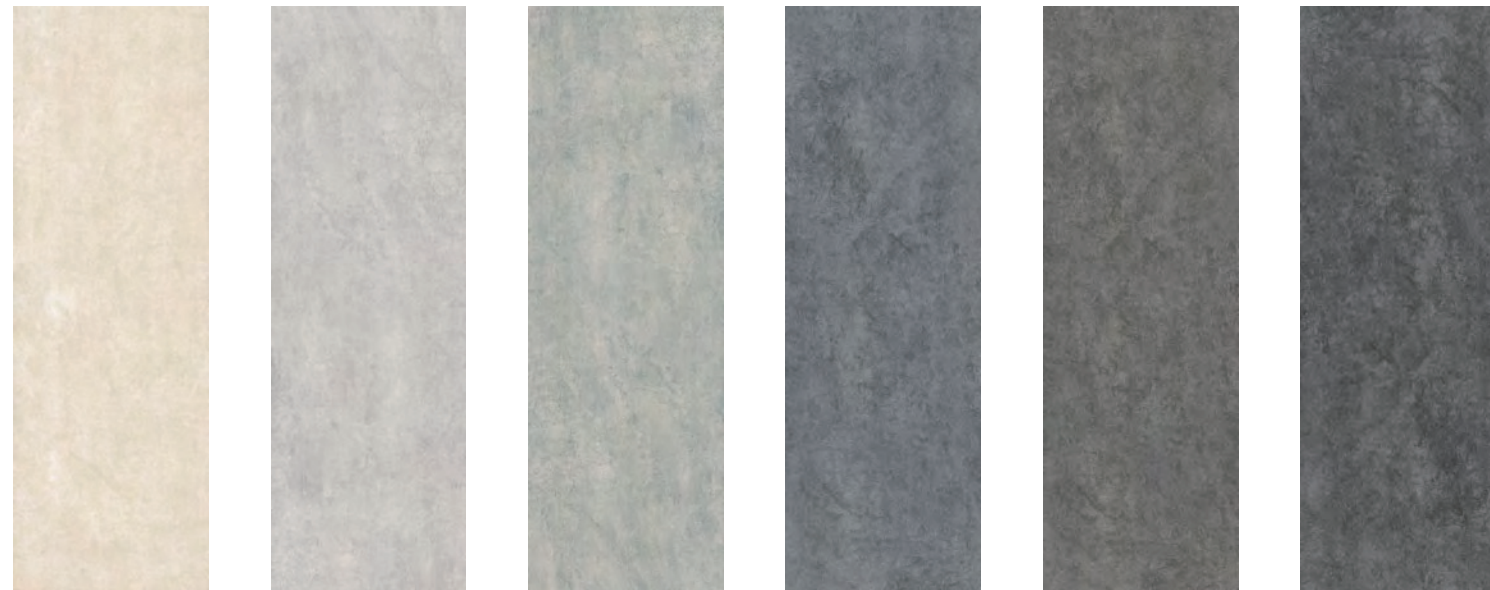
BSF19    BSF29    BSF28    BSF04    BSF07    BSF10

# 產品總覽 PRODUCT OVERVIEW

1000x2400MM / 1000x3000MM / 1000x3600MM



## 古堡 CASTLE



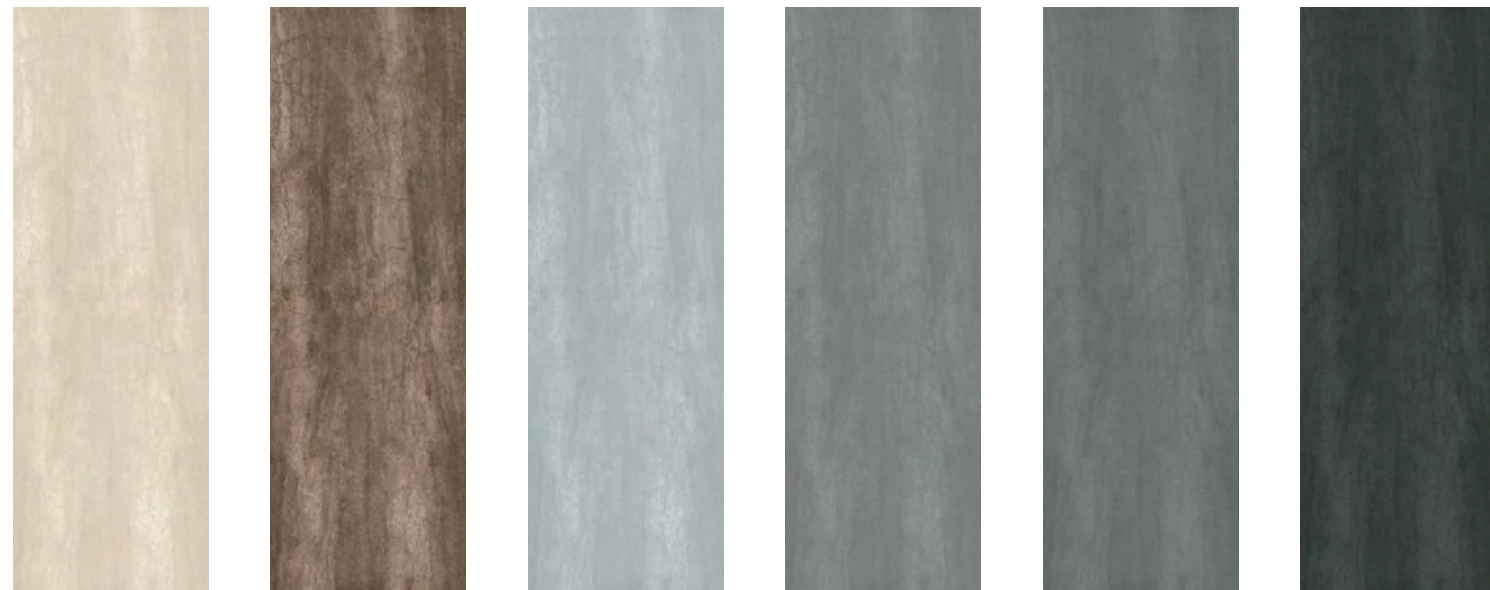
BSR02    BSR05    BSR15    BSR07    BSR04    BSR10

## 艾紳 ANCIENT WOOD



BSV05    BSV08    BSV09    BSV10    BSV19    BSV06

## 摩瑞 MERCURY



BMCM08    BMCM09    BMCM05    BMCM15    BMCM25    BMCM10

## 沃德 WOOD



BSY01    BSY02    BSY08    BSY03    BSY06    BSY09

產品總覽  
PRODUCT OVERVIEW

1000x2400MM / 1000x3000MM / 1000x3600MM

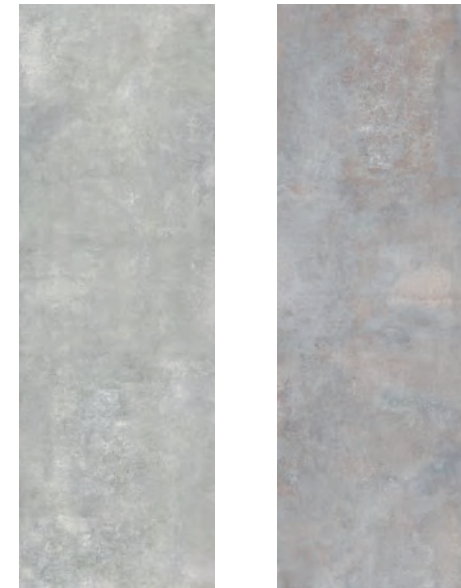


微風  
BREEZE



BSI02 BSI05 BSI05A BSI06 BSI09 BSI10

硅岩  
SILICASTONE



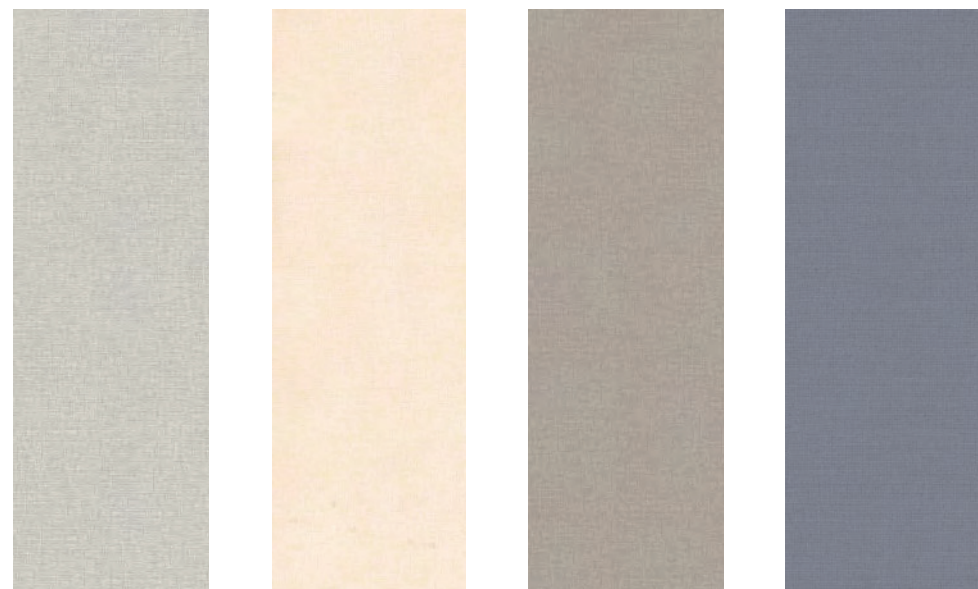
BSO05 BSO15

帝國  
EMPIRE



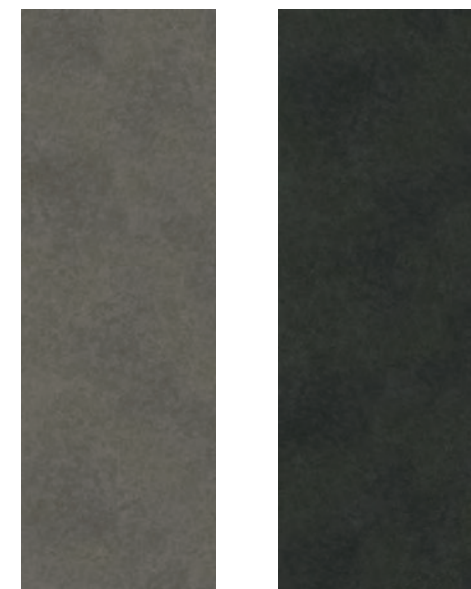
BSD01 BSD02 BSD05 BSD10

布紋  
WALL PAPER



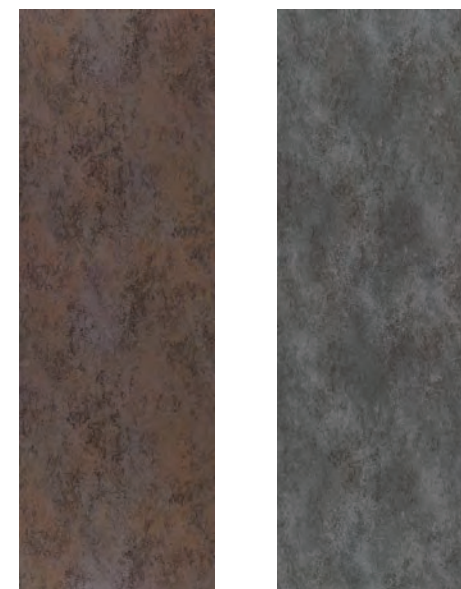
BSZ05 BSZ08 BSZ09 BSZ10

納布  
NEBULA



BNB09 BNB10

鐵鏽  
RUST



BSX06(F) BSX07(F)

高登  
GOLDEN AGE



BGA05(F) BGA09(F) BGA10(F) BGA06(F)

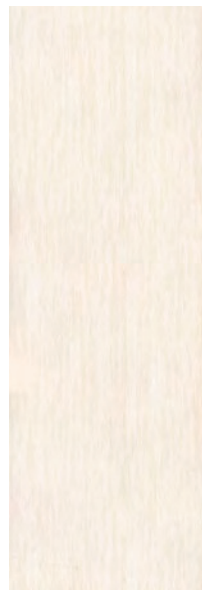


產品總覽  
PRODUCT OVERVIEW

1000x2400MM / 1000x3000MM / 1000x3600MM



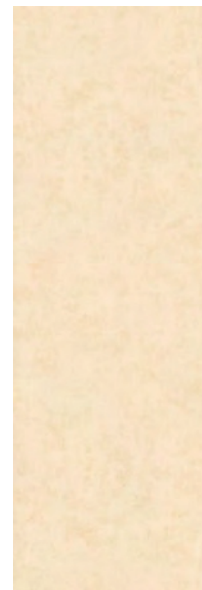
時尚  
STYLE SELECTIONS



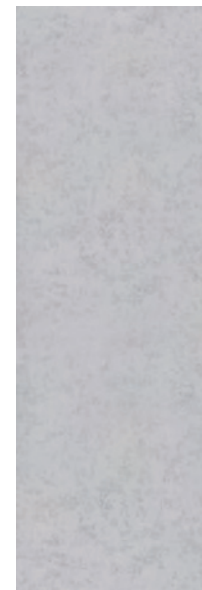
BSS03



BSS02



BSP18



BSP15

線石  
STONE LINE

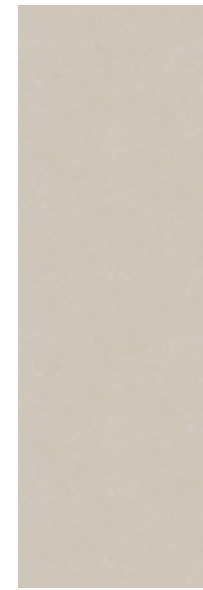


BSN08A



BSN05A

水泥  
CEMENT

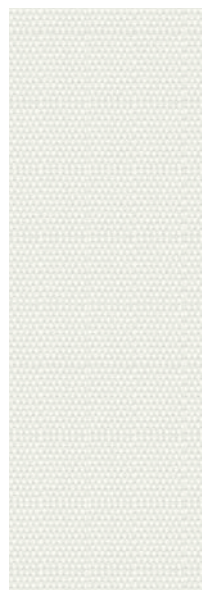


BSA08

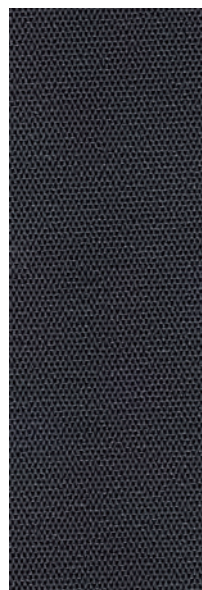


BSA05

珍珠  
PEARL



BSG01A



BSG10B



BSU01



BSU10

威爾  
WAVE

麻石  
GRANITE



BSF08A



BSF10A

卡拉拉（一體六片）  
CARRARA（SIX PATTERNS）



BST01B(A)



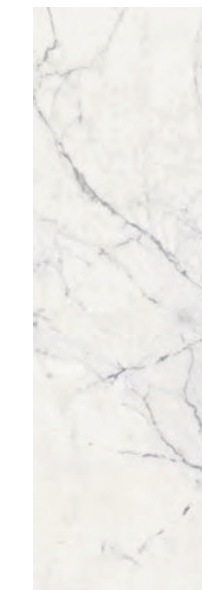
BST01B(B)



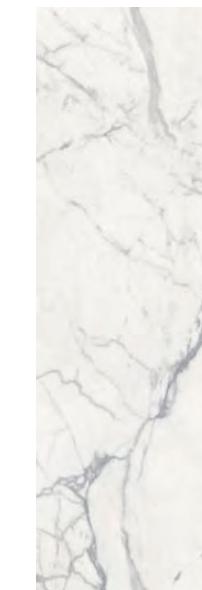
BST01B(C)



BST01B(D)



BST01B(E)



BST01B(F)



卡拉拉(對花)  
 CARRARA(SYMMETRY)



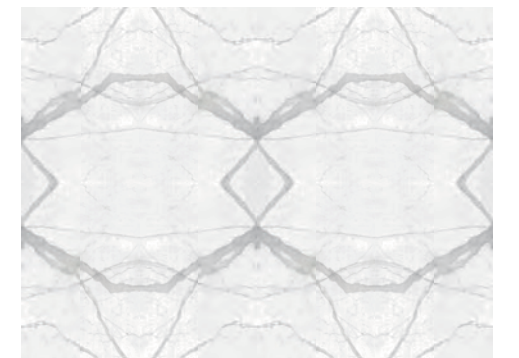
BST01C(A)      BST01C(B)



卡拉拉(四片對花)  
 CARRARA(FOUR PATTERNS)



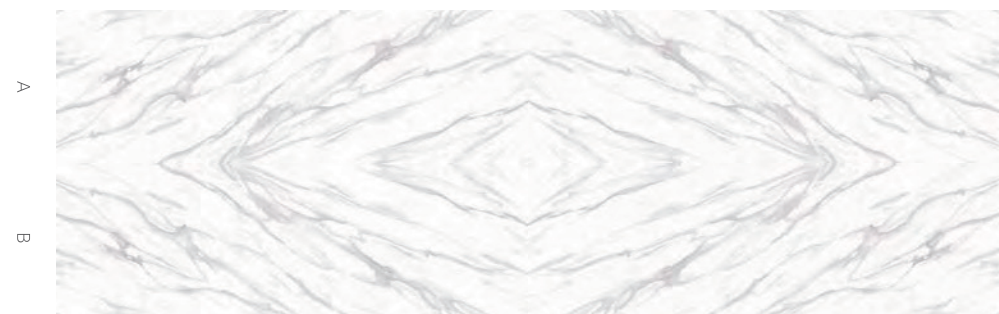
BST01E(A2)      BST01E(A1)      BST01E(B1)      BST01E(B2)



卡拉拉(十片對花)  
 CARRARA(TEN PATTERNS)



BST01F(A)      BST01F(B)



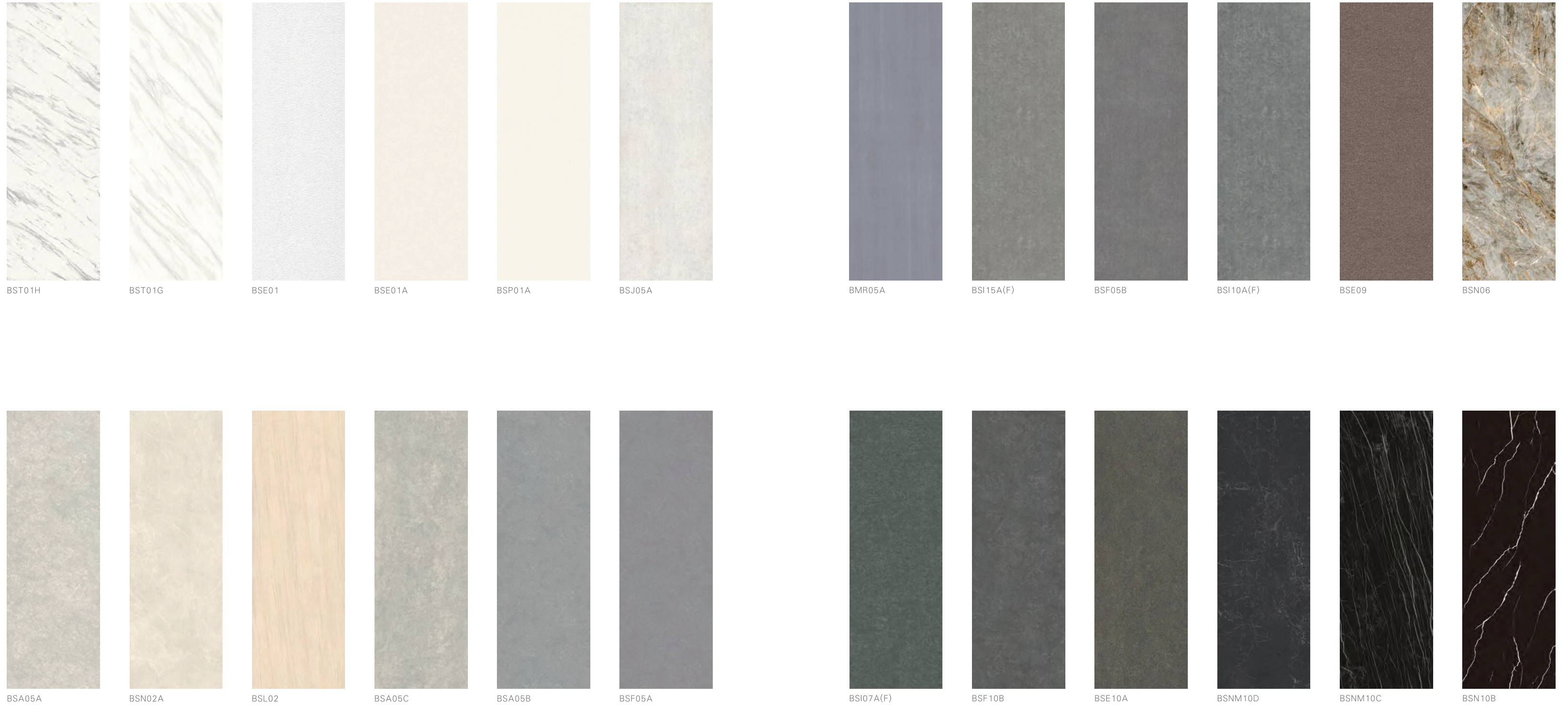
BST01D(A)      BST01D(B)      BST01D(C)      BST01D(D)      BST01D(E)      BST01D(E1)      BST01D(D1)      BST01D(C1)      BST01D(B1)      BST01D(A1)

# 產品總覽 PRODUCT OVERVIEW

1000x2400MM / 1000x3000MM / 1000x3600MM



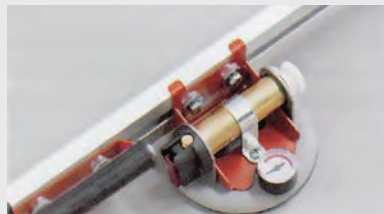
## 客訂品 CUSTOMIZED PRODUCT



# 施工說明

## TECHNICAL DETAILS

### 搬運 HANDLING



The manual suction tray can be installed on the other side of the big board for easy movement.

可安裝手動吸盤在薄板另一面，方便拿起。



Install the metal support on the back of the big board, and fix it on the big board to increase the stability of the big board.

在薄板背部安裝金屬支架，固定在薄板上增加穩定性。



It is suggested that truck transportation and forklift trucks be lifted to reduce the damage of the fixed plate.

建議使用貨車運輸和叉車抬降，做好固定薄板的工作，以免破損。

### 切割 CUTTING



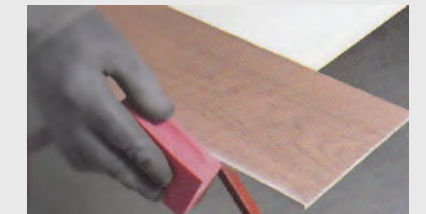
It is suggested that the cutting route should be planned before cutting the big board.

建議在切割前，先對薄板進行切割路線的規劃。



Use a glass knife that cuts straight lines to cut down on the glaze of a large plate for easy cutting.

用切割直線的玻璃刀在由面劃下割線。



Use the cutting machine to cut along the cutting line, grinding paper to smooth the sharp edges.

用切割機沿著切割線進行切割，用磨砂紙將鋒利邊緣磨平。

### 鑽孔 DRILLING



The manual cutting machine can cut the square adjusting holes on the large plate at any time.

手動切割機可以任意切割需要的方形調孔。



First place the position of the drilled hole in the ceramic plate and then drill it with a diamond-shaped round drill bit.

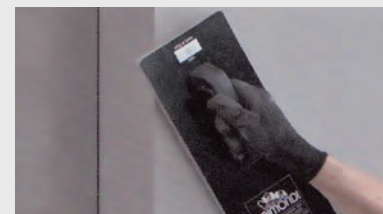
先在陶瓷薄板把將要鑽孔位置定好位，再用安裝有金剛石圓形鑽頭鑽孔。



Once the ceramic plate is drilled or cut, it must be carefully handled and placed.

陶瓷薄板一旦鑽孔或切割後要小心搬運和放置。

### 鋪貼 PAVING



Use the scraper to spread the adhesive on the floor and the big board, and smear it flat to facilitate the placement.

用刮刀把黏合劑平整的塗抹在地板與薄板上。



After big board paving, please reserve 2mm space to prevent cold shrink and heat rise.

薄板鋪貼後，預留2mm空隙預防熱漲冷縮。



After laying, the large plate is compacted, so that the inner layer is completely combined to ensure smooth surface.

鋪貼後將薄板壓實，讓內層完全密合並保證表面平整。

## Advantage / 產品優勢

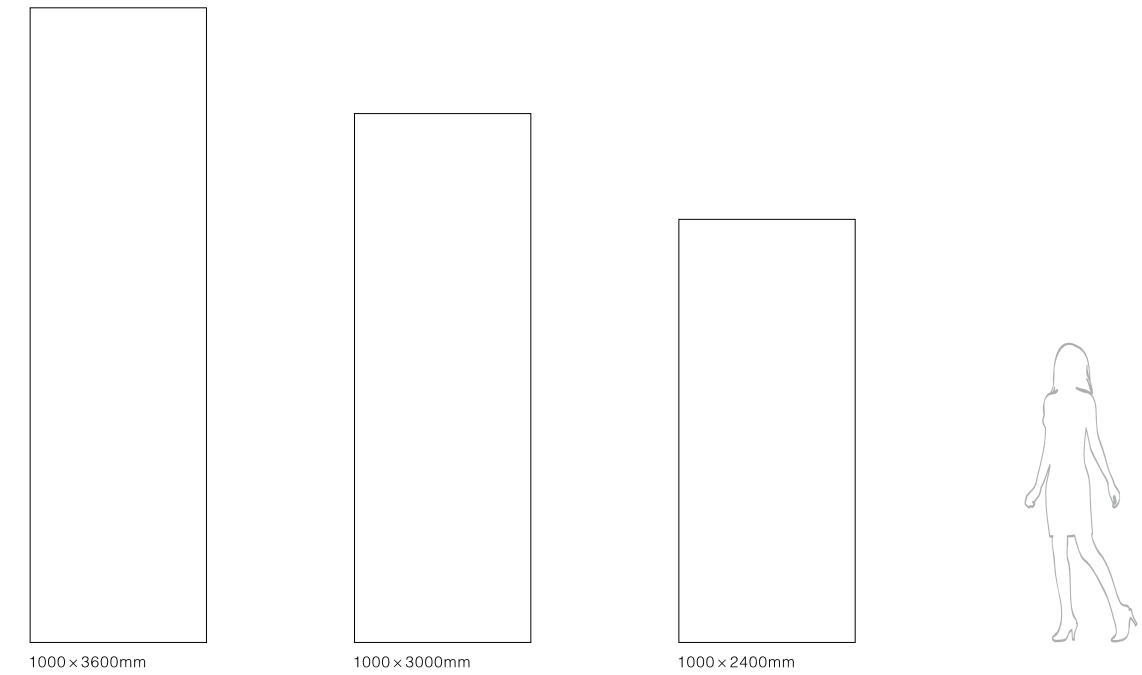
	<b>Ultrathin</b> 超薄 大規格超薄薄板，材料輕薄，大大降低了建築物荷載，增加了使用空間。
	<b>Low water absorption</b> 低吸水性 E≤0.5%的吸水率，污漬、水垢無法滲透，抗菌抑菌，防潮防濕永不變質。
	<b>High hardness</b> 高硬度 應用於外牆無懼風沙剝蝕，應用於廚房檯面，家具面板可直接在檯面操作。
	<b>Scratch resistance</b> 耐刮磨 刀鋒過後不留痕跡，具有優異的耐磨損性能。
	<b>Frost resistance</b> 抗凍 用於冰凍的環境，不龜裂，不剝落。
	<b>Crazing resistance</b> 抗龜裂 在任何惡劣氣候環境均不影響高品質的特性。
	<b>Fire resistance / High temperature resistance</b> 防火/耐高溫 耐高溫，明火燒灼不變色，無氣味、不冒煙，不釋放有害物質。
	<b>Corrosion resistance / Acid and alkali resistance</b> 耐酸鹼/耐鹼鹼 日常洗滌劑及維護在無後顧之憂。
	<b>Easy to clean</b> 易清潔 表面孔隙率近乎於零，易清潔保養，維護成本極低。
	<b>Stain resistance</b> 超強耐污 污垢、水漬無法滲透，不留痕跡。
	<b>Antibacterial and bacteriostasis</b> 抗菌抑菌 水漬無法滲透，抗菌抑菌，防潮防濕永不變質。
	<b>Food grade surface</b> 食品級表面 無機材料無毒無輻射，檯面即是鐵板可直接用於食物加工。

## Application Range / 應用範圍

	<b>Redecorating</b> 二次裝修 不必敲下舊磁磚，施工時直接黏貼覆蓋舊磁磚，安全、省時又省工。
	<b>Ventilated Facade</b> 建築外牆 大規格鋪貼，迅速方便，恢弘大氣，抗凍、抵禦紫外線侵蝕不變質。
	<b>Interior walls</b> 室內牆磚 豪華、優雅，防潮防濕，無毒無輻射，不留汗痕不變色。
	<b>Kitchen countertops</b> 廚房檯面 尺寸靈活多變、抗衝擊、耐刮磨、食品級表面，健康安全。
	<b>Bathroom countertops</b> 衛浴檯面 防潮防濕、抗菌抑菌、易清潔保養。
	<b>Dining / Coffee table</b> 餐檯/茶几 取代木質板材，不留汗痕，保持持久潔淨。
	<b>Cabinet, Wardrobe</b> 廚具/衣櫃 防火耐高溫、耐腐蝕耐鹽鹼，易清潔。
	<b>Door</b> 室內外門 防火、防潮防濕、抗凍、抵禦紫外線侵蝕不變質。
	<b>Composite panel partition</b> 複合隔牆板 背面加工貼上蜂窩鋁板的隔牆板是為了強化隔音、隔冷熱的最佳絕緣體。
	<b>Compound baseplate</b> 複合底板 可複合於名貴石材作為底板，從而大幅降低成本。
	<b>Heating panel</b> 發熱板 與石墨烯結合鋪貼室內牆，導熱快，無異味，無輻射，不漏電，環保又安全。
	<b>Home decoration painting</b> 磁板畫 高達95%以上的色彩高仿真效果，可以配合設計搭配任何素材。

顏色通 0757-83328420

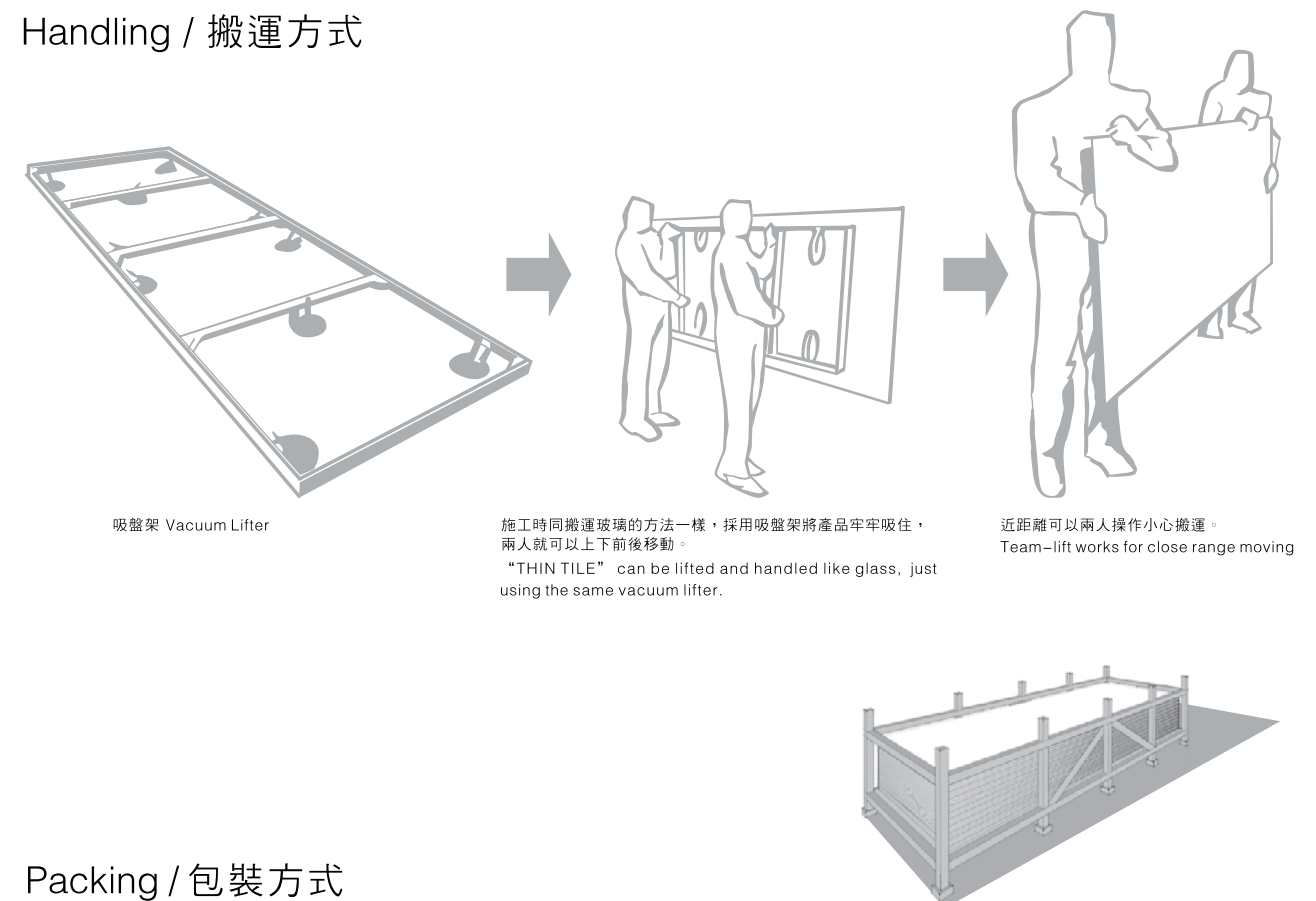
## Dimensions / 基本尺寸



## Technical Data / 技術參數

	Industrial Standard 工業標準 【參照陶瓷板國家標準 GB/T23266-2009】	GLOBE THIN TILE 高質數據
Springiness limit 彈性限度	No less than 12mm 彈性限度不小於12mm	15mm
Water absorption 吸水率	Average E≤0.5%, Individual E≤0.6% 平均值 E≤0.5%, 單值 E≤0.6%	E≤0.5%
Modulus of rupture 斷裂模數	Average ≥45MPa, Individual ≥40MPa 平均值 ≥45MPa, 單值 ≥40MPa	≥50MPa
Deep abrasion resistance 耐磨性	Floor tile: UL, ≤150mm³; GL, minimal class3@750cycles 地板用無釉陶瓷板耐磨損積不大於150mm³; 地板用有釉陶瓷板耐磨性不低於3級(轉數750轉)	Qualified 合格
Crazing resistance 抗龜裂性	Free from visible defects after test 有釉陶瓷板經抗龜裂性試驗後應無裂紋或剝落	Qualified 合格
Frost resistance 抗凍性	Free from visible defects after test 用於冰凍環境的陶瓷板經抗凍試驗後應無裂紋或剝落	Qualified 合格
Stain resistance 耐污性	Minimum class3 for glazed tile 有釉瓷質板經耐污試驗後應不低於3級	Class4
Thermal shock resistance 抗熱震性	Free from visible defects after test 經抗熱震試驗後應無裂紋或剝落	Qualified 合格
Household Chemicals 家庭用化學	Minimum UB for unglazed tile 無釉瓷質板應不低於UB級	UA/GA
Swimming Pool Salts 游泳池鹽類	Minimum GB for glazed tile 有釉瓷質板應不低於GB級	
Acids 酸溶液	Manufacture state the class level passed 製造商報告產品耐低濃度酸腐蝕性的級別	UA/GA
Alkalis 鹼溶液	Manufacture state the class level passed 製造商報告產品耐低濃度鹼腐蝕性的級別	UA/GA
Length & Width 長度和寬度	±1.0 mm	±0.8 mm
Thickness 厚度	±0.3 mm	±0.2 mm
Opposite size difference 對邊長度差	≤1.0 mm	≤0.8 mm
Diagonal difference 對角線長度差	≤1.5 mm	≤1.2 mm

## Handling / 搬運方式



## Packing / 包裝方式

Product Size 產品規格 (mm)	Quantity 包裝片數	Coverage 包裝面積			Weight 包裝重量		
	pcs/ctn (片/鐵架)	m²/pcs (m²/片)	pcs/m² (片/m²)	m²/ctn (m²/鐵架)	Kg/pcs (公斤/片)	Kg/m² (公斤/m²)	Kg/ctn (公斤/鐵架)
1000x2400x4.5	80	2.4	0.42	192	24	10	2100
1000x3000x4.5	60	3.0	0.33	180	30	10	2000
1000x3600x4.5	50	3.6	0.28	180	36	10	2000